

Integrin $\alpha 7$ (E959) polyclonal antibody

Catalog: BS7058

Host: Rabbit

Reactivity: Human, Mouse, Rat

BackGround:

Integrins are heterodimers composed of noncovalently associated transmembrane α and β subunits. The 16 α and 8 β subunits heterodimerize to produce more than 20 different receptors. Most integrin receptors bind ligands that are components of the extracellular matrix, including Fibronectin, collagen and vitronectin. Certain integrins can also bind to soluble ligands such as Fibrinogen, or to counterreceptors on adjacent cells such as the intracellular adhesion molecules (ICAMs), leading to aggregation of cells. Ligands serve to cross-link or cluster integrins by binding to adjacent integrin receptors; both receptor clustering and ligand occupancy are necessary for the activation of integrin-mediated responses. In addition to mediating cell adhesion and cytoskeletal organization, integrins function as signaling receptors. Signals transduced by integrins play a role in many biological processes, including cell growth, differentiation, migration and apoptosis.

Product:

1mg/ml in PBS with 0.1% Sodium Azide, 50% Glycerol.

Molecular Weight:

~ 25, 129 kDa

Swiss-Prot:

Q13683

Purification&Purity:

The antibody was affinity-purified from rabbit antiserum by affinity-chromatography using epitope-specific immunogen and the purity is > 95% (by SDS-PAGE).

Applications:

WB: 1:500~1:1000

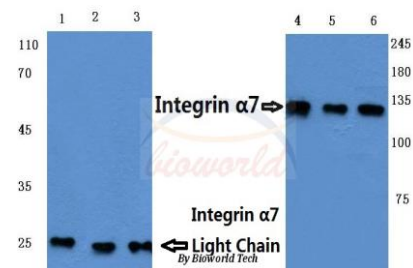
Storage&Stability:

Store at 4 °C short term. Aliquot and store at -20 °C long term. Avoid freeze-thaw cycles.

Specificity:

Integrin $\alpha 7$ (E959) polyclonal antibody detects endogenous levels of Integrin $\alpha 7$ protein (129 kDa) and the Integrin $\alpha 7$ light chain (25 kDa).

DATA:



Western blot (WB) analysis of Integrin $\alpha 7$ (LC) polyclonal antibody at 1:500 dilution

Lane1: HeLa cell lysate treated with LPS

Lane2: Raw264.7 cell lysate treated with UV

Lane3: PC12 cell lysate treated with UV

Lane4: HeLa cell lysate

Lane5: Mouse heart tissue lysate

Lane6: PC12 cell lysate

Note:

For research use only, not for use in diagnostic procedure.

Bioworld Technology, Inc.

Add: 1660 South Highway 100, Suite 500 St. Louis Park, MN 55416, USA.

Email: info@bioworld.com

Tel: 6123263284

Fax: 6122933841

Bioworld technology, co. Ltd.

Add: No 9, weidi road Qixia District Nanjing, 210046, P. R. China.

Email: info@biogot.com

Tel: 0086-025-68037686

Fax: 0086-025-68035151