

GPX7 polyclonal antibody

Catalog: BS70582

Host: Rabbit

Reactivity: Human, Mouse, Rat

BackGround:

GPx-7 (glutathione peroxidase 7), also known as GPX6, CL683 or NPGPx, is a 187 amino acid secreted protein belonging to the glutathione peroxidase family. GPx-7 catalyzes the reaction of glutathione into glutathione disulfide and is encoded by a gene located on human chromosome 1, which spans 260 million base pairs, contains over 3,000 genes and comprises nearly 8% of the human genome.

Product:

Rabbit IgG, 1mg/ml in PBS with 0.02% sodium azide, 50% glycerol, pH7.2

Molecular Weight:

~ 21 kDa

Swiss-Prot:

Q96SL4

Purification&Purity:

The antibody was affinity-purified from rabbit antiserum by affinity-chromatography using epitope-specific immunogen and the purity is > 95% (by SDS-PAGE).

Applications:

WB 1:500 - 1:2000

IHC 1:50 - 1:100

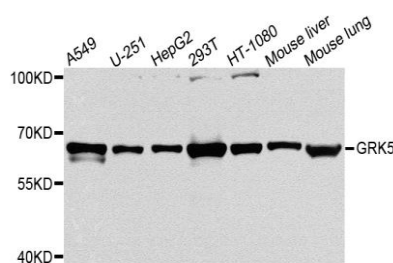
Storage&Stability:

Store at 4 °C short term. Aliquot and store at -20 °C long term. Avoid freeze-thaw cycles.

Specificity:

GPX7 polyclonal antibody detects endogenous levels of GPX7 protein.

DATA:



Western blot analysis of extracts of Mouse liver tissue, using GPX7 antibody.

Note:

For research use only, not for use in diagnostic procedure.

Bioworld Technology, Inc.

Add: 1660 South Highway 100, Suite 500 St. Louis Park, MN 55416, USA.

Email: info@bioworld.com

Tel: 6123263284

Fax: 6122933841

Bioworld technology, co. Ltd.

Add: No 9, weidi road Qixia District Nanjing, 210046, P. R. China.

Email: info@biogot.com

Tel: 0086-025-68037686

Fax: 0086-025-68035151