

## KLF15 polyclonal antibody

Catalog: BS70774

Host: Rabbit

Reactivity: Human

### Background:

KLF15, KLF6 and KLF3 are Krüppel-like zinc finger-containing transcription factors. KLF15, a kidney-enriched Krüppel-like factor, is a transcriptional activator that binds the CLCNKA promoter. KLF6 (also designated Zf9 or CPBP, for core promoter-binding protein) is rapidly induced during hepatic stellate cell activation and transactivates a reporter gene driven by the Collagen I promoter, suggesting that KLF6 plays a role in the response to tissue injury. KLF3 may play a role in hematopoiesis. KLF15, which is a nuclear protein, is expressed primarily in liver, heart, skeletal muscle and kidney tissues but is not detected in lymphoid tissues or bone marrow. It is an important regulator of GLUT4 in both adipose and muscle tissues.

### Product:

1mg/ml in PBS with 0.02% sodium azide, 50% glycerol, pH7.3.

### Molecular Weight:

~ 44 kDa

### Swiss-Prot:

Q9UIH9

### Purification&Purity:

The antibody was affinity-purified from rabbit antiserum by affinity-chromatography using epitope-specific im-

munogen and the purity is > 95% (by SDS-PAGE).

### Applications:

WB 1:500 - 1:2000

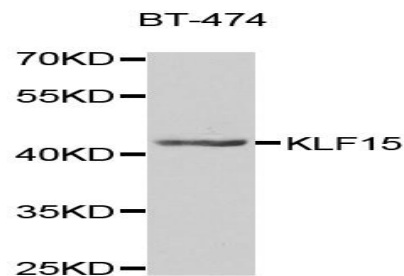
### Storage&Stability:

Store at 4 °C short term. Aliquot and store at -20 °C long term. Avoid freeze-thaw cycles.

### Specificity:

KLF15 polyclonal antibody detects endogenous levels of KLF15 protein.

### DATA:



Western blot analysis of extracts of BT-474 cell line, using KLF15 antibody.

### Note:

For research use only, not for use in diagnostic procedure.

### Bioworld Technology, Inc.

Add: 1660 South Highway 100, Suite 500 St. Louis Park, MN 55416, USA.

Email: [info@bioworld.com](mailto:info@bioworld.com)

Tel: 6123263284

Fax: 6122933841

### Bioworld technology, co. Ltd.

Add: No 9, weidi road Qixia District Nanjing, 210046, P. R. China.

Email: [info@biogot.com](mailto:info@biogot.com)

Tel: 0086-025-68037686

Fax: 0086-025-68035151