

TRIB1 polyclonal antibody

Catalog: BS70782

Host: Rabbit

Reactivity: Human

BackGround:

Adapter protein involved in protein degradation by interacting with COP1 ubiquitin ligase. The COP1-binding motif is masked by autoinhibitory interactions with the protein kinase domain. Serves to alter COP1 substrate specificity by directing the activity of COP1 toward CE-BPA. Binds selectively the recognition sequence of CE-BPA. Regulates myeloid cell differentiation by altering the expression of CEBPA in a COP1-dependent manner (By similarity. Controls macrophage, eosinophil and neutrophil differentiation via the COP1-binding domain (By similarity. Interacts with MAPK kinases and regulates activation of MAP kinases, but has no kinase activity.

Product:

1mg/ml in PBS with 0.02% sodium azide, 50% glycerol, pH7.2

Molecular Weight:

38kDa

Swiss-Prot:

Q96RU8

Purification&Purity:

The antibody was affinity-purified from rabbit antiserum by affinity-chromatography using epitope-specific immunogen and the purity is > 95% (by SDS-PAGE).

Applications:

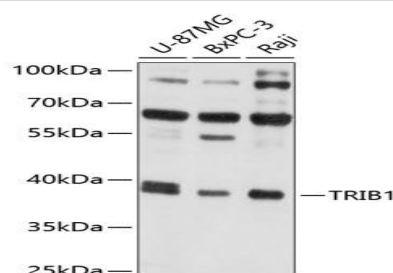
WB,1:1000 - 1:4000

Storage&Stability:

Store at 4 °C short term. Aliquot and store at -20 °C long term. Avoid freeze-thaw cycles.

Category:

Polyclonal Antibodies

DATA:

Western blot analysis of extracts of various cell lines, using TRIB1 antibody at 1:1000 dilution. Secondary antibody: HRP Goat Anti-Rabbit IgG at 1:10000 dilution. Lysates/proteins: 25ug per lane. Blocking buffer: 3% nonfat dry milk in TBST. Detection: ECL Basic Kit. Exposure time: 5s.

Note:

For research use only, not for use in diagnostic procedure.

Bioworld Technology, Inc.

Add: 1660 South Highway 100, Suite 500 St. Louis Park, MN 55416, USA.

Email: info@bioworld.com

Tel: 6123263284

Fax: 6122933841

Bioworld technology, co. Ltd.

Add: No 9, weidi road Qixia District Nanjing, 210046, P. R. China.

Email: info@biogot.com

Tel: 0086-025-68037686

Fax: 0086-025-68035151