

NCAM1 / CD56 polyclonal antibody

Catalog: BS70990

Host: Rabbit

Reactivity: Human, Mouse, Rat

BackGround:

This gene encodes a cell adhesion protein which is a member of the immunoglobulin superfamily. The encoded protein is involved in cell-to-cell interactions as well as cell-matrix interactions during development and differentiation. The encoded protein has been shown to be involved in development of the nervous system, and for cells involved in the expansion of T cells and dendritic cells which play an important role in immune surveillance. Alternative splicing results in multiple transcript variants.

Product:

Rabbit IgG, 1mg/ml in PBS with 0.02% sodium azide, 50% glycerol, pH7.2

Molecular Weight:

120-220KDa

Swiss-Prot:

P13591

Purification&Purity:

The antibody was affinity-purified from rabbit antiserum by affinity-chromatography using epitope-specific immunogen and the purity is > 95% (by SDS-PAGE).

Applications:

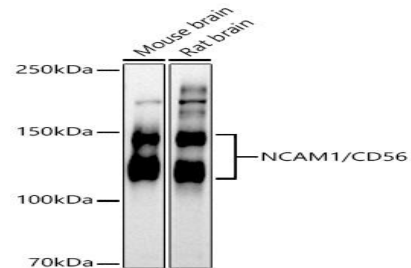
WB, 1:500 - 1:1000 | IHC, 1:50 - 1:200 | IF/ICC, 1:50 - 1:200

Storage&Stability:

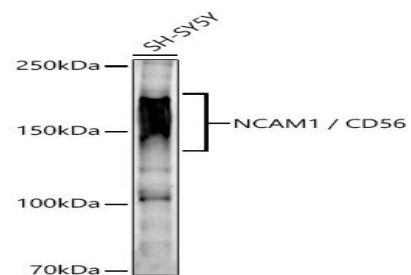
Store at 4 °C short term. Aliquot and store at -20 °C long term. Avoid freeze-thaw cycles.

Specificity:

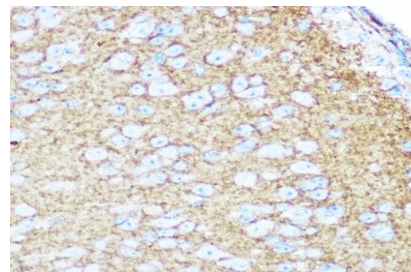
NCAM1 / CD56 polyclonal antibody detects endogenous levels of NCAM1 / CD56 protein.

DATA:

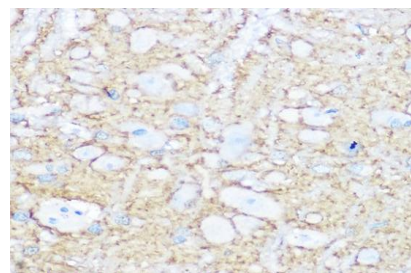
Western blot analysis of various lysates using NCAM1 / CD56 pAb at 1:500 dilution.



Western blot analysis of lysates from SH-SY5Y cells using NCAM1 / CD56 pAb at 1:500 dilution.



Immunohistochemistry analysis of NCAM1 / CD56 in paraffin-embedded mouse brain tissue using NCAM1 / CD56 pAb at a dilution of 1:100 (40x lens).



Immunohistochemistry analysis of NCAM1 / CD56 in paraffin-embedded mouse brain tissue using NCAM1 / CD56 pAb at a dilution of 1:100 (40x lens).

Bioworld Technology, Inc.

Add: 1660 South Highway 100, Suite 500 St. Louis Park, MN 55416, USA.

Email: info@bioworld.com

Tel: 6123263284

Fax: 6122933841

Bioworld technology, co. Ltd.

Add: No 9, weidi road Qixia District Nanjing, 210046, P. R. China.

Email: info@biogot.com

Tel: 0086-025-68037686

Fax: 0086-025-68035151



PRODUCT DATA SHEET

Bioworld Technology, Inc.

fin-embedded rat brain tissue using NCAM1 / CD56 Rabbit pAb at a dilution of 1:100 (40x lens).

Note:

For research use only, not for use in diagnostic procedure.

Bioworld Technology, Inc.

Add: 1660 South Highway 100, Suite 500 St. Louis Park,
MN 55416, USA.

Email: info@bioworld.com

Tel: 6123263284

Fax: 6122933841

Bioworld technology, co. Ltd.

Add: No 9, weidi road Qixia District Nanjing, 210046,
P. R. China.

Email: info@biogot.com

Tel: 0086-025-68037686

Fax: 0086-025-68035151