

## Endophilin I polyclonal antibody

Catalog: BS7108

Host: Rabbit

Reactivity: Human, Mouse

### Background:

The Endophilins comprise a family of three SH3 domain-containing proteins designated Endophilin I, II and III, or alternatively known as SH3P4, SH3P8 and SH3P13, respectively. These proteins associate with amphiphysin, synaptojanin and dynamin and are implicated in presynaptic vesicle trafficking at nerve terminals. The expression patterns of the Endophilins are consistent with their cellular functions at the neuronal synapse as Endophilin I is expressed only in the brain. Both Endophilin II and Endophilin III are detected in a variety of tissues. Endophilin I is also implicated in modulating G protein-coupled receptor signaling by functioning as an adapter protein and directing  $\beta$ 1 adrenergic receptors to the endocytic machinery.

### Product:

Rabbit IgG, 1mg/ml in PBS with 0.02% sodium azide, 50% glycerol, pH7.2

### Molecular Weight:

~ 40 kDa

### Swiss-Prot:

Q99962

### Purification&Purity:

The antibody was affinity-purified from rabbit antiserum by affinity-chromatography using epitope-specific im-

munogen and the purity is > 95% (by SDS-PAGE).

### Applications:

WB: 1:500~1:2000

IF: 1:50~1:200

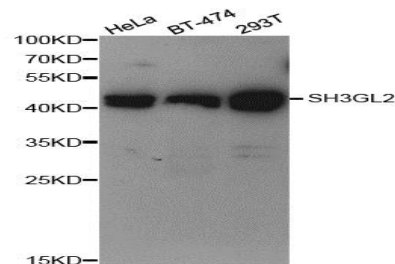
### Storage&Stability:

Store at 4 °C short term. Aliquot and store at -20 °C long term. Avoid freeze-thaw cycles.

### Specificity:

Endophilin I polyclonal antibody detects endogenous levels of Endophilin I protein.

### DATA:



Western blot analysis of Endophilin I polyclonal antibody

### Note:

For research use only, not for use in diagnostic procedure.

### Bioworld Technology, Inc.

Add: 1660 South Highway 100, Suite 500 St. Louis Park, MN 55416, USA.

Email: [info@bioworld.com](mailto:info@bioworld.com)

Tel: 6123263284

Fax: 6122933841

### Bioworld technology, co. Ltd.

Add: No 9, weidi road Qixia District Nanjing, 210046, P. R. China.

Email: [info@biogot.com](mailto:info@biogot.com)

Tel: 0086-025-68037686

Fax: 0086-025-68035151