

EP2 polyclonal antibody

Catalog: BS7109

Host: Rabbit

Reactivity: Human, Mouse, Rat

Background:

Prostaglandin E2, a member of the autacoid family of lipid mediators, is a major renal cyclooxygenase product of arachidonic acid metabolism. Prostaglandin E2 binds to four G protein-coupled E-prostanoid receptors, designated EP1, EP2, EP3 and EP4. The expression and function of the prostaglandin E2 receptors have been highly characterized in kidney. EP1, which is predominantly expressed in the collecting duct, couples to Gq proteins to inhibit sodium absorption and increase in intracellular calcium, which act as second messengers. EP2 is coupled to Gs proteins, which stimulate adenylyl cyclase. EP2 has the lowest expression in kidney, but EP2 knockout mice exhibit salt-sensitive hypertension, which suggests a role for EP2 in salt excretion. EP3 is expressed in renal vessels, thick ascending limb and collecting duct. EP3 has at least 6 alternative splice variants that couple to Gi proteins to inhibit cAMP, which subsequently inhibit sodium and water transport. In uterus, EP3 induces the contraction of uterine smooth muscles. EP4 is expressed in glomerulus and collecting duct. It couples to Gs proteins, which stimulate adenylyl cyclase and regulate glomerular tone and renal renin release.

Product:

Rabbit IgG, 1mg/ml in PBS with 0.02% sodium azide, 50% glycerol, pH7.2

Molecular Weight:

~ 50 kDa

Swiss-Prot:

P43116

Purification&Purity:

The antibody was affinity-purified from rabbit antiserum by affinity-chromatography using epitope-specific immunogen and the purity is > 95% (by SDS-PAGE).

Applications:

WB 1:500 - 1:1000

IHC 1:50 - 1:100

IF 1:50 - 1:200

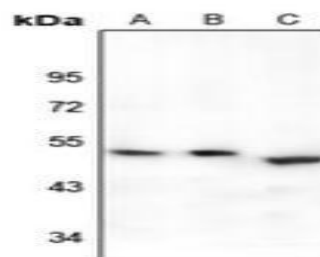
Storage&Stability:

Store at 4 °C short term. Aliquot and store at -20 °C long term. Avoid freeze-thaw cycles.

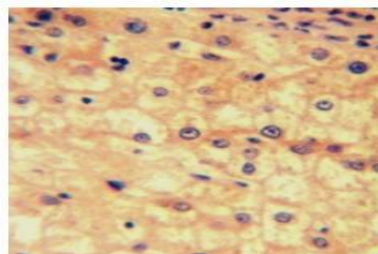
Specificity:

EP2 polyclonal antibody detects endogenous levels of EP2 protein.

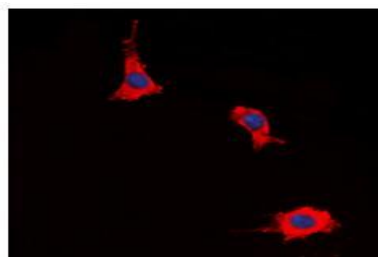
DATA:



Western blot analysis of EP2 expression in A549 (A), HEK293T (B), mouse lung (C) whole cell lysates.



Immunohistochemical analysis of EP2 staining in human liver cancer formalin fixed paraffin embedded tissue section.



Immunofluorescent analysis of EP2 staining in HeLa cells.

Note:

Bioworld Technology, Inc.

Add: 1660 South Highway 100, Suite 500 St. Louis Park, MN 55416, USA.

Email: info@bioworld.com

Tel: 6123263284

Fax: 6122933841

Bioworld technology, co. Ltd.

Add: No 9, weidi road Qixia District Nanjing, 210046, P. R. China.

Email: info@biogot.com

Tel: 0086-025-68037686

Fax: 0086-025-68035151



PRODUCT DATA SHEET

Bioworld Technology, Inc.

For research use only, not for use in diagnostic procedure.

Bioworld Technology, Inc.

Add: 1660 South Highway 100, Suite 500 St. Louis Park,
MN 55416, USA.

Email: info@bioworld.com

Tel: 6123263284

Fax: 6122933841

Bioworld technology, co. Ltd.

Add: No 9, weidi road Qixia District Nanjing, 210046,
P. R. China.

Email: info@biogot.com

Tel: 0086-025-68037686

Fax: 0086-025-68035151