

Ephrin-A1 polyclonal antibody

Catalog: BS7110

Host: Rabbit

Reactivity: Human, Mouse

BackGround:

The Eph subfamily represents the largest group of receptor protein kinases identified to date. There is increasing evidence that Eph family members are involved in central nervous system function and in development. Ligands for Eph receptors include ephrin-A1 (LERK-1/B61), identified as a ligand for the EphA2 (Eck) receptor; ephrin-A2 (ELF-1), identified as a ligand for the EphA3 and EphA4 (Sek) receptors; ephrin-A3 (LERK-3), identified as a ligand for EphA5 (Ehk1) and EphA3 (Hek) receptors; ephrin-A4 (LERK-4), identified as a ligand for the EphA3 receptor; ephrin-A5 (AL-1), identified as a ligand for EphA5 (REK7); ephrin-B1 (LERK-2), identified as a ligand for the EphB1 (Elk) and EphB2 (Cek5) receptors; ephrin-B2 (LERK-5), identified as a ligand for the EphB1, EphB3 (Cek10) and EphB2 receptors; and ephrin-B3 (LERK-8), identified as a ligand for EphB1.

Product:

Rabbit IgG, 1mg/ml in PBS with 0.02% sodium azide, 50% glycerol, pH7.2

Molecular Weight:

~23 kDa

Swiss-Prot:

P20827

Purification&Purity:

The antibody was affinity-purified from rabbit antiserum by affinity-chromatography using epitope-specific immunogen and the purity is > 95% (by SDS-PAGE).

Applications:

WB: 1:500~1:2000

IHC: 1:50~1:200

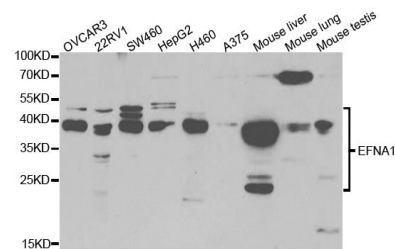
Storage&Stability:

Store at 4 °C short term. Aliquot and store at -20 °C long term. Avoid freeze-thaw cycles.

Specificity:

Ephrin-A1 polyclonal antibody detects endogenous levels of Ephrin-A1 protein.

DATA:



Western blot analysis of Ephrin-A1 polyclonal antibody

Note:

For research use only, not for use in diagnostic procedure.

Bioworld Technology, Inc.

Add: 1660 South Highway 100, Suite 500 St. Louis Park, MN 55416, USA.

Email: info@bioworld.com

Tel: 6123263284

Fax: 6122933841

Bioworld technology, co. Ltd.

Add: No 9, weidi road Qixia District Nanjing, 210046, P. R. China.

Email: info@biogot.com

Tel: 0086-025-68037686

Fax: 0086-025-68035151