

Ephrin-B2 polyclonal antibody

Catalog: BS7112

Host: Rabbit

Reactivity: Mouse, Rat

Background:

Ephrins, which act as ligands for Eph receptors, are cell-surface proteins which fall into two categories, ephrin-A and ephrin-B based on their structure and function. Ephrin-B proteins are transmembrane and have conserved cytoplasmic tyrosine residues that are phosphorylated upon interaction with an EphB receptor. Eph receptors and ephrins exhibit complementary expression in many tissues during embryogenesis indicating that bidirectional activation of Eph receptors and ephrin-B proteins may occur at expression domain interfaces. Ephrin-B1 transduces outside-in signals through C-terminal protein interactions that effect integrin-mediated cell attachment and migration. The distribution of ephrin-B1 in the developing retina suggests that it influences retinal axon mapping along the dorsal-ventral axis and may be involved in intratectal development.

Product:

Rabbit IgG, 1mg/ml in PBS with 0.02% sodium azide, 50% glycerol, pH7.2

Molecular Weight:

~ 50 kDa

Swiss-Prot:

P52799

Purification&Purity:

The antibody was affinity-purified from rabbit antiserum by affinity-chromatography using epitope-specific immunogen and the purity is > 95% (by SDS-PAGE).

Applications:

WB 1:500 - 1:2000

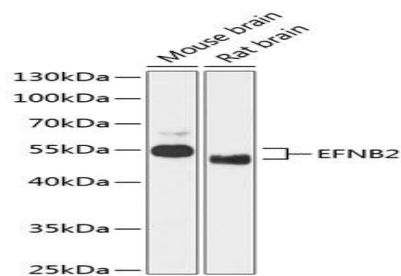
Storage&Stability:

Store at 4 °C short term. Aliquot and store at -20 °C long term. Avoid freeze-thaw cycles.

Specificity:

Ephrin-B2 polyclonal antibody detects endogenous levels of Ephrin-B2 protein.

DATA:



Western blot analysis of Ephrin-B2 polyclonal antibody

Note:

For research use only, not for use in diagnostic procedure.

Bioworld Technology, Inc.

Add: 1660 South Highway 100, Suite 500 St. Louis Park, MN 55416, USA.

Email: info@bioworld.com

Tel: 6123263284

Fax: 6122933841

Bioworld technology, co. Ltd.

Add: No 9, weidi road Qixia District Nanjing, 210046, P. R. China.

Email: info@biogot.com

Tel: 0086-025-68037686

Fax: 0086-025-68035151