

FOSL2 polyclonal antibody

Catalog: BS7119

Host: Rabbit

Reactivity: Human, Mouse, Rat

BackGround:

The v-Fos oncogene was initially identified as the transforming gene of two independent murine osteosarcoma virus isolates and an avian nephroblastoma virus. The cellular homolog, c-Fos, encodes a nuclear phosphoprotein that is rapidly and transiently induced by a variety of agents and functions as a transcriptional regulator for several genes. In contrast to c-Jun proteins, which form homo- and heterodimers which bind to specific DNA TPA response elements (TREs), c-Fos proteins are only active as heterodimers with members of the Jun gene family. Murine Fos B encodes a nuclear protein of 338 amino acids which has 70% homology with c-Fos, exhibits similar kinetics of expression as c-Fos and forms heterodimers with both c-Jun and Jun B, which bind to TRE DNA response elements. Functional homologs of c-Fos and Fos B include Fra-1 and Fra-2 genes.

Product:

Rabbit IgG, 1mg/ml in PBS with 0.02% sodium azide, 50% glycerol, pH7.2

Molecular Weight:

~ 31-35 kDa

Swiss-Prot:

P15408

Purification&Purity:

The antibody was affinity-purified from rabbit antiserum by affinity-chromatography using epitope-specific immunogen and the purity is > 95% (by SDS-PAGE).

Applications:

WB 1:500 - 1:1000

IHC 1:50 - 1:100

IF/ICC 1:50 - 1:200

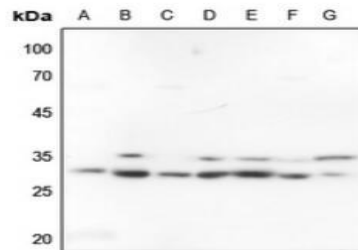
Storage&Stability:

Store at 4 °C short term. Aliquot and store at -20 °C long term. Avoid freeze-thaw cycles.

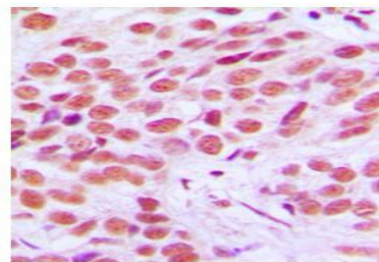
Specificity:

FOSL2 polyclonal antibody detects endogenous levels of FOSL2 protein.

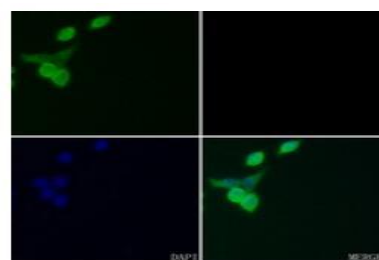
DATA:



Western blot analysis of FOSL2 expression in HEK293T (A), HeLa (B), H446 (C), mouse liver (D), mouse kidney (E), rat liver (F), rat kidney (G) whole cell lysates.



Immunohistochemical analysis of FOSL2 staining in human breast cancer formalin fixed paraffin embedded tissue section.



Immunofluorescent analysis of FOSL2 staining in MCF7 cells.

Note:

For research use only, not for use in diagnostic procedure.

Bioworld Technology, Inc.

Add: 1660 South Highway 100, Suite 500 St. Louis Park, MN 55416, USA.

Email: info@bioworld.com

Tel: 6123263284

Fax: 6122933841

Bioworld technology, co. Ltd.

Add: No 9, weidi road Qixia District Nanjing, 210046, P. R. China.

Email: info@biogot.com

Tel: 0086-025-68037686

Fax: 0086-025-68035151



PRODUCT DATA SHEET

Bioworld Biotech Co., Ltd

Bioworld Technology, Inc.

Add: 1660 South Highway 100, Suite 500 St. Louis Park,
MN 55416, USA.

Email: info@bioworld.com

Tel: 6123263284

Fax: 6122933841

Bioworld technology, co. Ltd.

Add: No 9, weidi road Qixia District Nanjing, 210046,
P. R. China.

Email: info@biogot.com

Tel: 0086-025-68037686

Fax: 0086-025-68035151