

PSIP1 polyclonal antibody

Catalog: BS71250

Host: Rabbit

Reactivity: Human, Mouse, Rat

BackGround:

The lens epithelium-derived growth factor (LEDGF), also designated p75p52, is a transcriptional coactivator that complexes with the human immunodeficiency virus type 1 (HIV-1) integrase. LEDGF/p75p52 is essential for the nuclear localization and chromosomal association of viral proteins. As the primary integrase-to-chromatin tethering factor for HIV-1, LEDGF/p75p52 is responsible for the cellular trafficking of lentiviral integrases. During apoptosis, LEDGF/p75p52 is cleaved at three sites by caspase-3 and caspase-7, contributing to the pathogenesis of atopic disorders.

Product:

Rabbit IgG, 1mg/ml in PBS with 0.02% sodium azide, 50% glycerol, pH7.2

Molecular Weight:

Refer to figures

Swiss-Prot:

O75475

Purification&Purity:

The antibody was affinity-purified from rabbit antiserum by affinity-chromatography using epitope-specific immunogen and the purity is > 95% (by SDS-PAGE).

Applications:

WB 1:500 - 1:2000

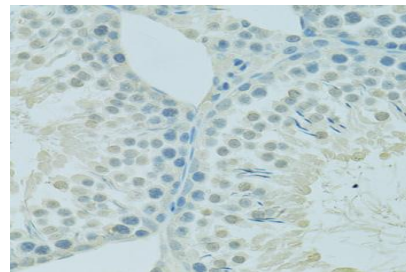
IHC 1:50 - 1:200

Storage&Stability:

Store at 4 °C short term. Aliquot and store at -20 °C long term. Avoid freeze-thaw cycles.

Specificity:

PSIP1 polyclonal antibody detects endogenous levels of PSIP1 protein.

DATA:

Immunohistochemistry of paraffin-embedded rat testis using PSIP1 antibody.

Note:

For research use only, not for use in diagnostic procedure.

Bioworld Technology, Inc.

Add: 1660 South Highway 100, Suite 500 St. Louis Park, MN 55416, USA.

Email: info@bioworld.com

Tel: 6123263284

Fax: 6122933841

Bioworld technology, co. Ltd.

Add: No 9, weidi road Qixia District Nanjing, 210046, P. R. China.

Email: info@biogot.com

Tel: 0086-025-68037686

Fax: 0086-025-68035151