

STRA13 polyclonal antibody

Catalog: BS71368

Host: Rabbit

Reactivity: Human

BackGround:

DNA-binding component of the Fanconi anemia (FA core complex). Required for the normal activation of the FA pathway, leading to monoubiquitination of the FANCI-FANCD2 complex in response to DNA damage, cellular resistance to DNA cross-linking drugs, and prevention of chromosomal breakage. In complex with CENPS (MHF heterodimer, crucial cofactor for FANCM in both binding and ATP-dependent remodeling of DNA. Stabilizes FANCM. In complex with CENPS and FANCM (but not other FANC proteins, rapidly recruited to blocked forks and promotes gene conversion at blocked replication forks. In complex with CENPS, CENPT and CENPW (CENP-T-W-S-X heterotetramer, involved in the formation of a functional kinetochore outer plate, which is essential for kinetochore-microtubule attachment and faithful mitotic progression. As a component of MHF and CENP-T-W-S-X complexes, binds DNA and bends it to form a nucleosome-like structure. DNA-binding function is fulfilled in the presence of CENPS, with the following preference for DNA substates: Holliday junction > double-stranded > splay arm > single-stranded. Does not bind DNA on its own.

Product:

1mg/ml in PBS with 0.02% sodium azide, 50% glycerol, pH7.2

Molecular Weight:

14kDa

Swiss-Prot:

A8MT69

Purification&Purity:

The antibody was affinity-purified from rabbit antiserum by affinity-chromatography using epitope-specific immunogen and the purity is > 95% (by SDS-PAGE).

Applications:

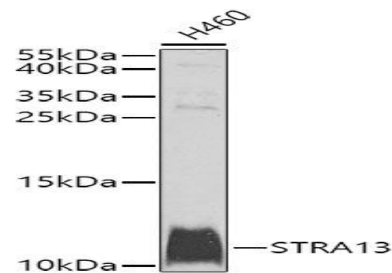
WB, 1:500 - 1:2000

Storage&Stability:

Store at 4 °C short term. Aliquot and store at -20 °C long term. Avoid freeze-thaw cycles.

Category:

Polyclonal Antibodies

DATA:

Western blot analysis of extracts of H460 cells, using STRA13 antibody at 1:1000 dilution. Secondary antibody: HRP Goat Anti-Rabbit IgG at 1:10000 dilution. Lysates/proteins: 25ug per lane. Blocking buffer: 3% nonfat dry milk in TBST. Detection: ECL Basic Kit. Exposure time: 60s.

Note:

For research use only, not for use in diagnostic procedure.

Bioworld Technology, Inc.

Add: 1660 South Highway 100, Suite 500 St. Louis Park, MN 55416, USA.

Email: info@bioworld.com

Tel: 6123263284

Fax: 6122933841

Bioworld technology, co. Ltd.

Add: No 9, weidi road Qixia District Nanjing, 210046, P. R. China.

Email: info@biogot.com

Tel: 0086-025-68037686

Fax: 0086-025-68035151