

TRPC1 polyclonal antibody

Catalog: BS71383

Host: Rabbit

Reactivity: Human, Mouse

Background:

Human TRPC1 protein is a 793 amino acid cation channel that is expressed in fetal and adult brain, and adult heart, testis and ovary, where it may influence store-operated Ca^{2+} entry as a component of capacitative calcium entry (CCE) complexes. The activation of store-mediated Ca^{2+} entry in human cells occurs through the association between inositol 1,4,5-trisphosphate receptors and TRPC1.

Product:

Rabbit IgG, 1mg/ml in PBS with 0.02% sodium azide, 50% glycerol, pH7.2

Molecular Weight:

~ 91 kDa

Swiss-Prot:

P48995

Purification&Purity:

The antibody was affinity-purified from rabbit antiserum by affinity-chromatography using epitope-specific immunogen and the purity is > 95% (by SDS-PAGE).

Applications:

WB 1:500 - 1:2000

IHC 1:50 - 1:200

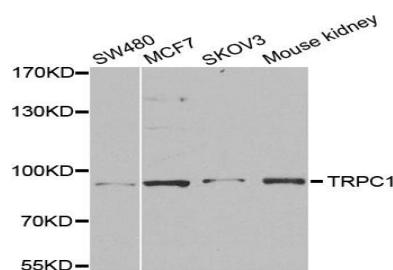
Storage&Stability:

Store at 4 °C short term. Aliquot and store at -20 °C long term. Avoid freeze-thaw cycles.

Specificity:

TRPC1 polyclonal antibody detects endogenous levels of TRPC1 protein.

DATA:



Western blot analysis of extracts of various cell lines, using TRPC1 antibody at 1:1000 dilution.

Note:

For research use only, not for use in diagnostic procedure.

Bioworld Technology, Inc.

Add: 1660 South Highway 100, Suite 500 St. Louis Park, MN 55416, USA.

Email: info@bioworld.com

Tel: 6123263284

Fax: 6122933841

Bioworld technology, co. Ltd.

Add: No 9, weidi road Qixia District Nanjing, 210046, P. R. China.

Email: info@biogol.com

Tel: 0086-025-68037686

Fax: 0086-025-68035151