

## IL6R polyclonal antibody

Catalog: BS7203

Host: Rabbit

Reactivity: Human, Mouse, Rat

### BackGround:

IL-6 activates intracellular signaling through binding a receptor consisting of a ligand-binding protein (IL-6R $\alpha$ ) and a second protein. IL-6 first binds to IL-6R $\alpha$  (also known as gp80), which subsequently associates with a gp130 dimer. The active signaling complex consists of, at minimum, IL-6, IL-6R $\alpha$  and a dimer of two gp130 proteins that are linked by a disulfide bond. A soluble form of IL-6R $\alpha$ , namely sIL-6R $\alpha$ , is generated by proteolytic cleavage of the membrane-bound precursor and can function as an agonistic molecule that can actively participate in cell-to-cell signaling. The second subunit of the IL-6 complex, gp130, also functions as a component of several additional receptor complexes, including leukemia inhibitory factor (LIF), oncostatin M (OSM), ciliary neurotrophic factor (CNTF) and IL-11. LIF binds to the LIF receptor with low affinity and to a complex of the LIF receptor and gp130 with high affinity, while OSM appears to bind to gp130 with low affinity and to a complex of gp130 and the LIF receptor with high affinity.

### Product:

Rabbit IgG, 1mg/ml in PBS with 0.02% sodium azide, 50% glycerol, pH7.2

### Molecular Weight:

~ 52 kDa

### Swiss-Prot:

P08887

### Purification&Purity:

The antibody was affinity-purified from rabbit antiserum by affinity-chromatography using epitope-specific immunogen and the purity is > 95% (by SDS-PAGE).

### Applications:

WB: 1:500~1:1000

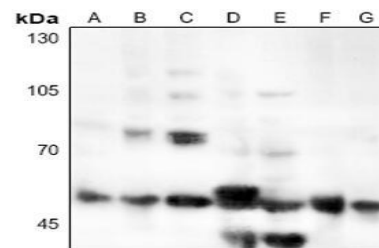
### Storage&Stability:

Store at 4 °C short term. Aliquot and store at -20 °C long term. Avoid freeze-thaw cycles.

### Specificity:

IL6R polyclonal antibody detects endogenous levels of IL6R protein.

### DATA:



Western blot (WB) analysis of IL6R polyclonal antibody at 1:500 dilution

LaneA:HEK293T whole cell lysate(40ug)

LaneB:Hela whole cell lysate(40ug)

LaneC:HGC27 whole cell lysate(40ug)

LaneD:The Liver tissue lysate of Mouse(40ug)

LaneE:The Lung tissue lysate of Mouse(40ug)

LaneF:The Liver tissue lysate of Rat(40ug)

LaneG:The Lung tissue lysate of Rat(40ug)

### Note:

For research use only, not for use in diagnostic procedure.

### Bioworld Technology, Inc.

Add: 1660 South Highway 100, Suite 500 St. Louis Park, MN 55416, USA.

Email: [info@bioworld.com](mailto:info@bioworld.com)

Tel: 6123263284

Fax: 6122933841

### Bioworld technology, co. Ltd.

Add: No 9, weidi road Qixia District Nanjing, 210046, P. R. China.

Email: [info@biogot.com](mailto:info@biogot.com)

Tel: 0086-025-68037686

Fax: 0086-025-68035151