

## CB2 polyclonal antibody

Catalog: BS72043

Host: Rabbit

Reactivity: Human, Mouse, Rat

### BackGround:

The cannabinoid receptors (CB1 and CB2) are G protein-coupled receptors that inhibit adenylate cyclase activity in response to psychoactive cannabinoids. CB1 is expressed in brain tissue and, in low levels, in testis. CB2 is expressed only by cells of the immune system. The cannabinoid receptors mediate most of the cannabinoid-induced responses in a dose-dependent, stereoselective manner. This response system is thought to be involved in specific brain functions, such as nociception, control of movement, memory and neuroendocrine regulation, as well as having a possible role in brain development. In addition, CB1 may mediate the addictive behavior involved with the use of psychoactive cannabinoids, such as THC in marijuana.

### Product:

Rabbit IgG, 1mg/ml in PBS with 0.02% sodium azide, 50% glycerol, pH7.2

### Molecular Weight:

45kDa

### Swiss-Prot:

P34972

### Purification&Purity:

The antibody was affinity-purified from rabbit antiserum by affinity-chromatography using epitope-specific im-

munogen and the purity is > 95% (by SDS-PAGE).

### Applications:

WB 1:500 - 1:2000

IHC 1:50 - 1:100

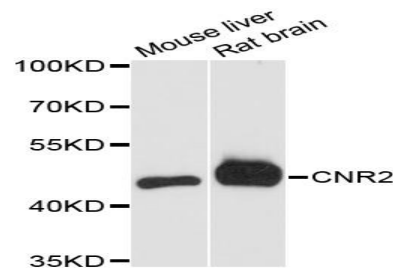
### Storage&Stability:

Store at 4 °C short term. Aliquot and store at -20 °C long term. Avoid freeze-thaw cycles.

### Specificity:

CB2 polyclonal antibody detects endogenous levels of CB2 protein.

### DATA:



Western blot analysis of extracts of various cell lines, using CNR2 antibody at 1:3000 dilution.

### Note:

For research use only, not for use in diagnostic procedure.

### Bioworld Technology, Inc.

Add: 1660 South Highway 100, Suite 500 St. Louis Park, MN 55416, USA.

Email: [info@bioworld.com](mailto:info@bioworld.com)

Tel: 6123263284

Fax: 6122933841

### Bioworld technology, co. Ltd.

Add: No 9, weidi road Qixia District Nanjing, 210046, P. R. China.

Email: [info@biogot.com](mailto:info@biogot.com)

Tel: 0086-025-68037686

Fax: 0086-025-68035151