

PARP12 polyclonal antibody

Catalog: BS72090

Host: Rabbit

Reactivity: Human, Mouse, Rat

BackGround:

Poly [ADP-ribose] polymerase 12 is an enzyme that in humans is encoded by the PARP12 gene.

Product:

Rabbit IgG, 1mg/ml in PBS with 0.02% sodium azide, 50% glycerol, pH7.2

Molecular Weight:

79kDa

Swiss-Prot:

Q9H0J9

Purification&Purity:

The antibody was affinity-purified from rabbit antiserum by affinity-chromatography using epitope-specific immunogen and the purity is > 95% (by SDS-PAGE).

Applications:

WB 1:500 - 1:2000

Storage&Stability:

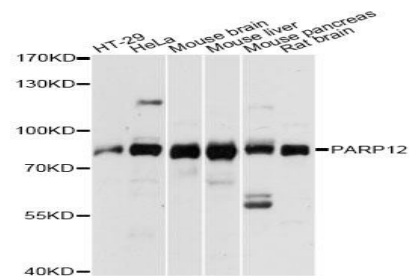
Store at 4 °C short term. Aliquot and store at -20 °C long

term. Avoid freeze-thaw cycles.

Specificity:

PARP12 polyclonal antibody detects endogenous levels of PARP12 protein.

DATA:



Western blot analysis of extracts of various cell lines, using PARP12 antibody at 1:3000 dilution.

Note:

For research use only, not for use in diagnostic procedure.

Bioworld Technology, Inc.

Add: 1660 South Highway 100, Suite 500 St. Louis Park, MN 55416, USA.

Email: info@bioworld.com

Tel: 6123263284

Fax: 6122933841

Bioworld technology, co. Ltd.

Add: No 9, weidi road Qixia District Nanjing, 210046, P. R. China.

Email: info@biogot.com

Tel: 0086-025-68037686

Fax: 0086-025-68035151