

PLCH1 polyclonal antibody

Catalog: BS72222

Host: Rabbit

Reactivity: Rat

BackGround:

PLCH1 is a member of the PLC-eta family of the phosphoinositide-specific phospholipase C (PLC) superfamily of enzymes that cleave phosphatidylinositol 4,5-bisphosphate (PtdIns(4,5)P₂) to generate second messengers inositol 1,4,5-trisphosphate (IP₃) and diacylglycerol (DAG) (Hwang et al., 2005 [PubMed 15702972]).[supplied by OMIM, Jun 2009]

Product:

1mg/ml in PBS with 0.02% sodium azide, 50% glycerol, pH7.2

Molecular Weight:

175kDa

Swiss-Prot:

Q4KWH8

Purification&Purity:

The antibody was affinity-purified from rabbit antiserum by affinity-chromatography using epitope-specific immunogen and the purity is > 95% (by SDS-PAGE).

Applications:

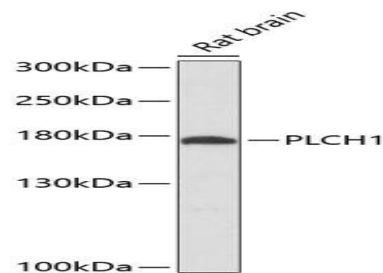
WB, 1:1000 - 1:3000

Storage&Stability:

Store at 4 °C short term. Aliquot and store at -20 °C long term. Avoid freeze-thaw cycles.

Category:

Polyclonal Antibodies

DATA:

Western blot analysis of extracts of rat brain, using PLCH1 antibody at 1:3000 dilution. Secondary antibody: HRP Goat Anti-Rabbit IgG at 1:10000 dilution. Lysates/proteins: 25ug per lane. Blocking buffer: 3% nonfat dry milk in TBST. Detection: ECL Basic Kit. Exposure time: 90s.

Note:

For research use only, not for use in diagnostic procedure.

Bioworld Technology, Inc.

Add: 1660 South Highway 100, Suite 500 St. Louis Park, MN 55416, USA.

Email: info@bioworld.com

Tel: 6123263284

Fax: 6122933841

Bioworld technology, co. Ltd.

Add: No 9, weidi road Qixia District Nanjing, 210046, P. R. China.

Email: info@biogot.com

Tel: 0086-025-68037686

Fax: 0086-025-68035151