

## IGSF6 polyclonal antibody

Catalog: BS72532

Host: Rabbit

Reactivity: Human, Mouse, Rat

### BackGround:

This gene is localized to a locus associated with inflammatory bowel disease. It is coded entirely within the intron of METTL9 which is transcribed in the opposite strand of the DNA.

### Product:

1 mg/ml in Phosphate buffered saline (PBS) with 0.05% sodium azide, approx. pH 7.2.

### Molecular Weight:

~ 30 kDa

### Swiss-Prot:

O95976

### Purification&Purity:

The antibody was affinity-purified from rabbit antiserum by affinity-chromatography using epitope-specific immunogen and the purity is > 95% (by SDS-PAGE).

### Applications:

WB 1:500 - 1:2000

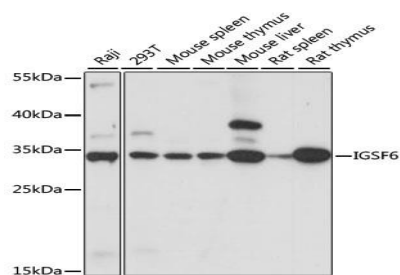
### Storage&Stability:

Store at 4 °C short term. Aliquot and store at -20 °C long term. Avoid freeze-thaw cycles.

### Specificity:

IGSF6 polyclonal antibody detects endogenous levels of IGSF6 protein.

### DATA:



Western blot analysis of extracts of various cell lines, using IGSF6 antibody.

### Note:

For research use only, not for use in diagnostic procedure.

### Bioworld Technology, Inc.

Add: 1660 South Highway 100, Suite 500 St. Louis Park, MN 55416, USA.

Email: [info@bioworld.com](mailto:info@bioworld.com)

Tel: 6123263284

Fax: 6122933841

### Bioworld technology, co. Ltd.

Add: No 9, weidi road Qixia District Nanjing, 210046, P. R. China.

Email: [info@biogol.com](mailto:info@biogol.com)

Tel: 0086-025-68037686

Fax: 0086-025-68035151