

Synoretin polyclonal antibody

Catalog: BS7255

Host: Rabbit

Reactivity: Human

BackGround:

The synucleins, including α -synuclein (also designated NACP for nonamyloid component precursor), β -synuclein (also designated PNP 14 for phosphoneuroprotein 14), and γ -synuclein (also designated persyn or BCSG1 for breast cancer-specific gene 1) are presynaptic proteins abundant in neurons. α -Synuclein, identified as a component of Alzheimer's disease amyloid plaques, is localized to neuronal cell bodies and synapses. Coordinate expression of α -synuclein and β -synuclein may be important during hematopoietic cell differentiation.

Product:

Rabbit IgG, 1mg/ml in PBS with 0.02% sodium azide, 50% glycerol, pH7.2

Molecular Weight:

~ 20 kDa

Swiss-Prot:

O76070

Purification&Purity:

The antibody was affinity-purified from rabbit antiserum by affinity-chromatography using epitope-specific immunogen and the purity is > 95% (by SDS-PAGE).

Applications:

WB 1:2000 - 1:5000
IHC 1:50 - 1:200

Storage&Stability:

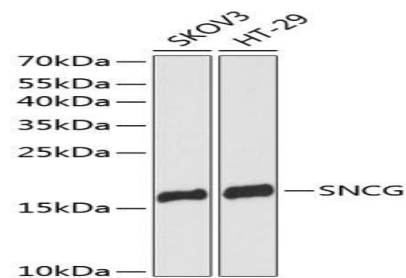
Store at 4 °C short term. Aliquot and store at -20 °C long

term. Avoid freeze-thaw cycles.

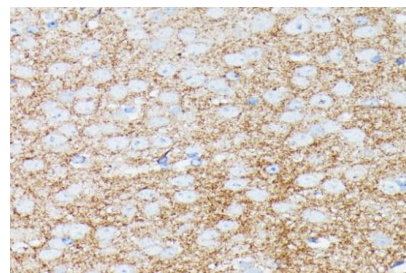
Specificity:

Synoretin polyclonal antibody detects endogenous levels of Synoretin protein.

DATA:



Western blot (WB) analysis of Synoretin polyclonal antibody



Note:

For research use only, not for use in diagnostic procedure.

Bioworld Technology, Inc.

Add: 1660 South Highway 100, Suite 500 St. Louis Park, MN 55416, USA.

Email: info@bioworld.com

Tel: 6123263284

Fax: 6122933841

Bioworld technology, co. Ltd.

Add: No 9, weidi road Qixia District Nanjing, 210046, P. R. China.

Email: info@biogot.com

Tel: 0086-025-68037686

Fax: 0086-025-68035151