

CPLX3 polyclonal antibody

Catalog: BS75416

Host: Rabbit

Reactivity: Mouse, Rat

BackGround:

Complexin that regulates SNARE protein complex-mediated synaptic vesicle fusion (By similarity. Required for the maintenance of synaptic ultrastructure in the adult retina (By similarity. Positively regulates synaptic transmission through synaptic vesicle availability and exocytosis of neurotransmitters at photoreceptor ribbon synapses in the retina (By similarity. Suppresses tonic photoreceptor activity and baseline 'noise' by suppression of Ca²⁺ vesicle tonic release and the facilitation of evoked synchronous and asynchronous Ca²⁺ vesicle release (By similarity.

Product:

1mg/ml in PBS with 0.02% sodium azide, 50% glycerol, pH7.2

Molecular Weight:

18kDa

Swiss-Prot:

Q8WVH0

Purification&Purity:

The antibody was affinity-purified from rabbit antiserum by affinity-chromatography using epitope-specific immunogen and the purity is > 95% (by SDS-PAGE).

Applications:

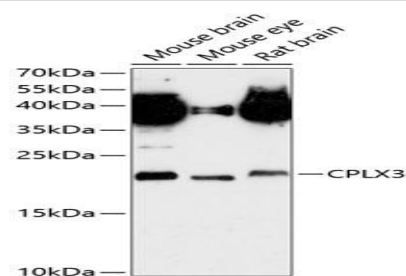
WB,1:500 - 1:2000

Storage&Stability:

Store at 4 °C short term. Aliquot and store at -20 °C long term. Avoid freeze-thaw cycles.

Modification:

Unmodification

DATA:

Western blot analysis of extracts of various cell lines, using CPLX3 antibody at 1:3000 dilution. Secondary antibody: HRP Goat Anti-Rabbit IgG at 1:10000 dilution. Lysates/proteins: 25ug per lane. Blocking buffer: 3% nonfat dry milk in TBST. Detection: ECL Enhanced Kit. Exposure time: 90s.

Note:

For research use only, not for use in diagnostic procedure.

Bioworld Technology, Inc.

Add: 1660 South Highway 100, Suite 500 St. Louis Park, MN 55416, USA.

Email: info@bioworld.com

Tel: 6123263284

Fax: 6122933841

Bioworld technology, co. Ltd.

Add: No 9, weidi road Qixia District Nanjing, 210046, P. R. China.

Email: info@biogot.com

Tel: 0086-025-68037686

Fax: 0086-025-68035151