

BSCL2 polyclonal antibody

Catalog: BS75853

Host: Rabbit

Reactivity: Human, Mouse, Rat

BackGround:

This gene encodes the multi-pass transmembrane protein seipin. This protein localizes to the endoplasmic reticulum and may be important for lipid droplet morphology. Mutations in this gene have been associated with congenital generalized lipodystrophy type 2 or Bernardi-nelli-Seip syndrome, a rare autosomal recessive disease characterized by a near absence of adipose tissue and severe insulin resistance. Alternatively spliced transcript variants encoding different isoforms have been found for this gene. Naturally occurring read-through transcription occurs between this locus and the neighboring locus HNRNPUL2 (heterogeneous nuclear ribonucleoprotein U-like 2).

Product:

1mg/ml in PBS with 0.02% sodium azide, 50% glycerol, pH7.2

Molecular Weight:

50kDa

Swiss-Prot:

Q96G97

Purification&Purity:

The antibody was affinity-purified from rabbit antiserum by affinity-chromatography using epitope-specific immunogen and the purity is > 95% (by SDS-PAGE).

Applications:

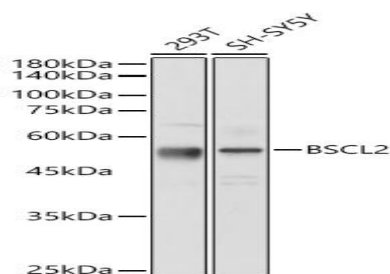
WB, 1:500 - 1:2000 | IHC, 1:50 - 1:200 | IF/ICC, 1:50 - 1:200

Storage&Stability:

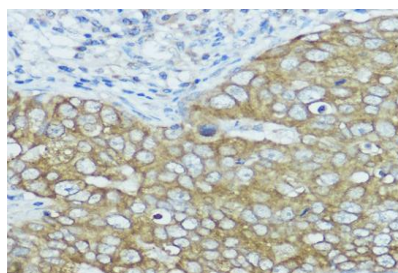
Store at 4 °C short term. Aliquot and store at -20 °C long term. Avoid freeze-thaw cycles.

Modification:

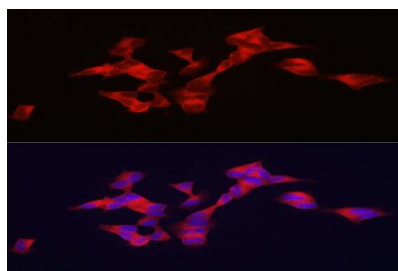
Unmodification

DATA:

Western blot analysis of extracts of various cell lines, using BSCL2 antibody at 1:1000 dilution. Secondary antibody: HRP Goat Anti-Rabbit IgG at 1:10000 dilution. Lysates/proteins: 25ug per lane. Blocking buffer: 3% nonfat dry milk in TBST. Detection: ECL Basic Kit. Exposure time: 30s.



Immunohistochemistry of paraffin-embedded human breast cancer using BSCL2 antibody at dilution of 1:100. Perform high pressure antigen retrieval with 10 mM citrate buffer pH 6.0 before commencing with IHC staining protocol.



Immunofluorescence analysis of SH-SY5Y cells using BSCL2 antibody at dilution of 1:100. Blue: DAPI for nuclear staining.

Note:

For research use only, not for use in diagnostic procedure.

Bioworld Technology, Inc.

Add: 1660 South Highway 100, Suite 500 St. Louis Park, MN 55416, USA.

Email: info@bioworld.com

Tel: 6123263284

Fax: 6122933841

Bioworld technology, co. Ltd.

Add: No 9, weidi road Qixia District Nanjing, 210046, P. R. China.

Email: info@biogot.com

Tel: 0086-025-68037686

Fax: 0086-025-68035151