

SLC23A3 polyclonal antibody

Catalog: BS76053

Host: Rabbit

Reactivity: Mouse

BackGround:

Predicted to enable transmembrane transporter activity.
Predicted to be involved in transmembrane transport.
Predicted to be integral component of membrane.

Product:

1mg/ml in PBS with 0.02% sodium azide, 50% glycerol,
pH7.2

Molecular Weight:

54kDa

Swiss-Prot:

Q6PIS1

Purification&Purity:

The antibody was affinity-purified from rabbit antiserum
by affinity-chromatography using epitope-specific im-
munogen and the purity is > 95% (by SDS-PAGE).

Applications:

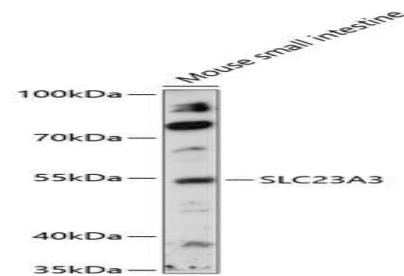
WB, 1:500 - 1:2000

Storage&Stability:

Store at 4 °C short term. Aliquot and store at -20 °C long
term. Avoid freeze-thaw cycles.

Modification:

Unmodification

DATA:

Western blot analysis of extracts of mouse small intestine, using
SLC23A3 antibody at 1:1000 dilution. Secondary antibody: HRP
Goat Anti-Rabbit IgG at 1:10000 dilution. Lysates/proteins:
25ug per lane. Blocking buffer: 3% nonfat dry milk in
TBST. Detection: ECL Basic Kit. Exposure time: 90s.

Note:

For research use only, not for use in diagnostic procedure.

Bioworld Technology, Inc.

Add: 1660 South Highway 100, Suite 500 St. Louis Park,
MN 55416, USA.

Email: info@bioworld.com

Tel: 6123263284

Fax: 6122933841

Bioworld technology, co. Ltd.

Add: No 9, weidi road Qixia District Nanjing, 210046,
P. R. China.

Email: info@biogot.com

Tel: 0086-025-68037686

Fax: 0086-025-68035151