

**ligp1 polyclonal antibody**

Catalog: BS76189

Host: Rabbit

Reactivity: Mouse

**BackGround:**

Enables GTPase activity; guanyl ribonucleotide binding activity; and identical protein binding activity. Involved in defense response to Gram-negative bacterium; defense response to protozoan; and regulation of autophagy. Acts upstream of or within cellular response to interferon-beta and response to bacterium. Located in endoplasmic reticulum membrane and symbiont-containing vacuole membrane. Is expressed in several structures, including cardiovascular system; foregut; genitourinary system; limb; and respiratory system.

**Product:**

1mg/ml in PBS with 0.02% sodium azide, 50% glycerol, pH7.2

**Molecular Weight:**

48KDa

**Swiss-Prot:****Purification&Purity:**

The antibody was affinity-purified from rabbit antiserum by affinity-chromatography using epitope-specific immunogen and the purity is > 95% (by SDS-PAGE).

**Applications:**

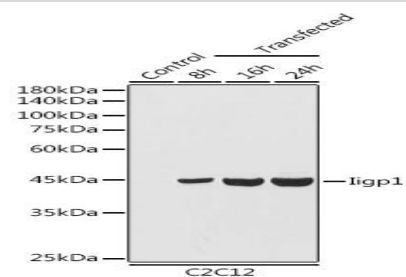
WB, 1:500 - 1:2000

**Storage&Stability:**

Store at 4 °C short term. Aliquot and store at -20 °C long term. Avoid freeze-thaw cycles.

**Modification:**

Unmodification

**DATA:**

Western blot analysis of extracts of C2C12 cells, using Iigp1 antibody at 1:1000 dilution. Secondary antibody: HRP Goat Anti-Rabbit IgG at 1:10000 dilution. Lysates/proteins: 25ug per lane. Blocking buffer: 3% nonfat dry milk in TBST. Detection: ECL Basic Kit. Exposure time: 30s.

**Note:**

For research use only, not for use in diagnostic procedure.

**Bioworld Technology, Inc.**

Add: 1660 South Highway 100, Suite 500 St. Louis Park, MN 55416, USA.

Email: [info@bioworld.com](mailto:info@bioworld.com)

Tel: 6123263284

Fax: 6122933841

**Bioworld technology, co. Ltd.**

Add: No 9, weidi road Qixia District Nanjing, 210046, P. R. China.

Email: [info@biogot.com](mailto:info@biogot.com)

Tel: 0086-025-68037686

Fax: 0086-025-68035151