

SIK1 polyclonal antibody

Catalog: BS76200

Host: Rabbit

Reactivity: Human, Mouse

BackGround:

This gene encodes a serine/threonine protein kinase that contains a ubiquitin-associated (UBA) domain. The encoded protein is a member of the adenosine monophosphate-activated kinase (AMPK) subfamily of kinases that play a role in conserved signal transduction pathways. A mutation in this gene is associated with early infantile epileptic encephalopathy 30.

Product:

1mg/ml in PBS with 0.02% sodium azide, 50% glycerol, pH7.2

Molecular Weight:

80kDa

Swiss-Prot:

P57059

Purification&Purity:

The antibody was affinity-purified from rabbit antiserum by affinity-chromatography using epitope-specific immunogen and the purity is > 95% (by SDS-PAGE).

Applications:

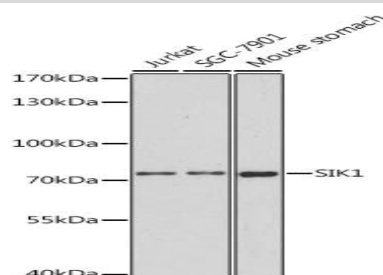
WB, 1:500 - 1:2000

Storage&Stability:

Store at 4 °C short term. Aliquot and store at -20 °C long term. Avoid freeze-thaw cycles.

Modification:

Unmodification

DATA:

Western blot analysis of extracts of various cell lines, using SIK1 antibody at 1:1000 dilution. Secondary antibody: HRP Goat Anti-Rabbit IgG at 1:10000 dilution. Lysates/proteins: 25ug per lane. Blocking buffer: 3% nonfat dry milk in TBST. Detection: ECL Basic Kit. Exposure time: 150s.

Note:

For research use only, not for use in diagnostic procedure.

Bioworld Technology, Inc.

Add: 1660 South Highway 100, Suite 500 St. Louis Park, MN 55416, USA.

Email: info@bioworld.com

Tel: 6123263284

Fax: 6122933841

Bioworld technology, co. Ltd.

Add: No 9, weidi road Qixia District Nanjing, 210046, P. R. China.

Email: info@biogot.com

Tel: 0086-025-68037686

Fax: 0086-025-68035151