

CDCA8 polyclonal antibody

Catalog: BS76323

Host: Rabbit

Reactivity: Human, Mouse, Rat

BackGround:

This gene encodes a component of the chromosomal passenger complex. This complex is an essential regulator of mitosis and cell division. This protein is cell-cycle regulated and is required for chromatin-induced microtubule stabilization and spindle formation. Alternate splicing results in multiple transcript variants. Pseudogenes of this gene are found on chromosomes 7, 8 and 16.

Product:

1mg/ml in PBS with 0.02% sodium azide, 50% glycerol, pH7.2

Molecular Weight:

36kDa

Swiss-Prot:

Q53HL2

Purification&Purity:

The antibody was affinity-purified from rabbit antiserum by affinity-chromatography using epitope-specific immunogen and the purity is > 95% (by SDS-PAGE).

Applications:

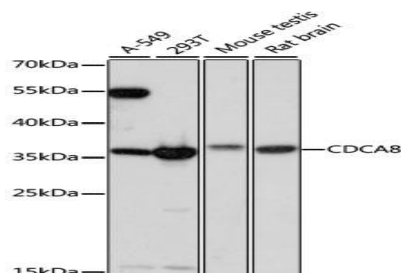
WB, 1:200 - 1:2000

Storage&Stability:

Store at 4 °C short term. Aliquot and store at -20 °C long term. Avoid freeze-thaw cycles.

Modification:

Unmodification

DATA:

Western blot analysis of extracts of various cell lines, using CDCA8 antibody at 1:1000 dilution. Secondary antibody: HRP Goat Anti-Rabbit IgG at 1:10000 dilution. Lysates/proteins: 25ug per lane. Blocking buffer: 3% nonfat dry milk in TBST. Detection: ECL Basic Kit. Exposure time: 60s.

Note:

For research use only, not for use in diagnostic procedure.

Bioworld Technology, Inc.

Add: 1660 South Highway 100, Suite 500 St. Louis Park, MN 55416, USA.

Email: info@bioworld.com

Tel: 6123263284

Fax: 6122933841

Bioworld technology, co. Ltd.

Add: No 9, weidi road Qixia District Nanjing, 210046, P. R. China.

Email: info@biogot.com

Tel: 0086-025-68037686

Fax: 0086-025-68035151