

MLLT3/AF9 polyclonal antibody

Catalog: BS76431

Host: Rabbit

Reactivity: Human, Mouse, Rat

BackGround:

Chromatin reader component of the super elongation complex (SEC, a complex required to increase the catalytic rate of RNA polymerase II transcription by suppressing transient pausing by the polymerase at multiple sites along the DNA. Specifically recognizes and binds acetylated histone H3, with a preference for histone H3 that is crotonylated. Crotonylation marks active promoters and enhancers and confers resistance to transcriptional repressors. Recognizes and binds histone H3 crotonylated at 'Lys-9' (H3K9cr, and with slightly lower affinity histone H3 crotonylated at 'Lys-18' (H3K18cr. Also recognizes and binds histone H3 acetylated and butyrylated at 'Lys-9' (H3K9ac and H3K9bu, respectively, but with lower affinity than crotonylated histone H3. In the SEC complex, MLLT3 is required to recruit the complex to crotonylated histones. Recruitment of the SEC complex to crotonylated histones promotes recruitment of DOT1L on active chromatin to deposit histone H3 'Lys-79' methylation (H3K79me. Plays a key role in hematopoietic stem cell (HSC maintenance by preserving, rather than conferring, HSC stemness. Acts by binding to the transcription start site of active genes in HSCs and sustaining level of H3K79me2, probably by recruiting DOT1L.

Product:

1mg/ml in PBS with 0.02% sodium azide, 50% glycerol, pH7.2

Molecular Weight:

80kDa

Swiss-Prot:

P42568

Purification&Purity:

The antibody was affinity-purified from rabbit antiserum by affinity-chromatography using epitope-specific immunogen and the purity is > 95% (by SDS-PAGE).

Applications:

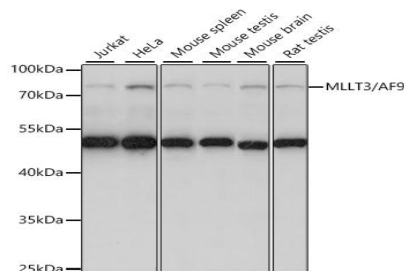
WB, 1:500 - 1:2000

Storage&Stability:

Store at 4 °C short term. Aliquot and store at -20 °C long term. Avoid freeze-thaw cycles.

Modification:

Unmodification

DATA:

Western blot analysis of extracts of various cell lines, using MLLT3/AF9 antibody at 1:1000 dilution. Secondary antibody: HRP Goat Anti-Rabbit IgG at 1:10000 dilution. Lysates/proteins: 25ug per lane. Blocking buffer: 3% nonfat dry milk in TBST. Detection: ECL Basic Kit. Exposure time: 30s.

Note:

For research use only, not for use in diagnostic procedure.

Bioworld Technology, Inc.

Add: 1660 South Highway 100, Suite 500 St. Louis Park, MN 55416, USA.

Email: info@bioworld.com

Tel: 6123263284

Fax: 6122933841

Bioworld technology, co. Ltd.

Add: No 9, weidi road Qixia District Nanjing, 210046, P. R. China.

Email: info@biogot.com

Tel: 0086-025-68037686

Fax: 0086-025-68035151