

IFI35 polyclonal antibody

Catalog: BS76759

Host: Rabbit

Reactivity: Human, Mouse

BackGround:

Acts as a signaling pathway regulator involved in innate immune system response. In response to interferon IFN-alpha, associates in a complex with signaling pathway regulator NMI to regulate immune response; the complex formation prevents proteasome-mediated degradation of IFI35 and correlates with IFI35 dephosphorylation. In complex with NMI, inhibits virus-triggered type I interferon/IFN-beta production. In complex with NMI, negatively regulates nuclear factor NF-kappa-B signaling by inhibiting the nuclear translocation, activation and transcription of the NF-kappa-B subunit p65/RELA, resulting in the inhibition of endothelial cell proliferation, migration and re-endothelialization of injured arteries. Beside its role as an intracellular signaling pathway regulator, also functions extracellularly as damage-associated molecular patterns (DAMPs) to promote inflammation when actively released by macrophage to the extracellular space during cell injury and pathogen invasion. Macrophage-secreted IFI35 activates NF-kappa-B signaling in adjacent macrophages through Toll-like receptor 4/TLR4 activation, thereby inducing NF-kappa-B translocation from the cytoplasm into the nucleus which promotes the release of proinflammatory cytokines.

Product:

1mg/ml in PBS with 0.02% sodium azide, 50% glycerol, pH7.2

Molecular Weight:

35kDa

Swiss-Prot:

P80217

Purification&Purity:

The antibody was affinity-purified from rabbit antiserum by affinity-chromatography using epitope-specific immunogen and the purity is > 95% (by SDS-PAGE).

Applications:

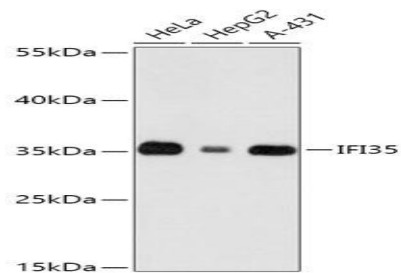
WB,1:500 - 1:2000|IF/ICC,1:50 - 1:100

Storage&Stability:

Store at 4 °C short term. Aliquot and store at -20 °C long term. Avoid freeze-thaw cycles.

Modification:

Unmodification

DATA:

Western blot analysis of extracts of various cell lines, using IFI35 antibody at 1:1000 dilution. Secondary antibody: HRP Goat Anti-Rabbit IgG at 1:10000 dilution. Lysates/proteins: 25ug per lane. Blocking buffer: 3% nonfat dry milk in TBST. Detection: ECL Basic Kit. Exposure time: 30s.

Note:

For research use only, not for use in diagnostic procedure.

Bioworld Technology, Inc.

Add: 1660 South Highway 100, Suite 500 St. Louis Park, MN 55416, USA.

Email: info@bioworld.com

Tel: 6123263284

Fax: 6122933841

Bioworld technology, co. Ltd.

Add: No 9, weidi road Qixia District Nanjing, 210046, P. R. China.

Email: info@biogot.com

Tel: 0086-025-68037686

Fax: 0086-025-68035151