

**ZDHHC14 polyclonal antibody**

Catalog: BS76890

Host: Rabbit

Reactivity: Human

**BackGround:**

Predicted to enable protein-cysteine S-palmitoyltransferase activity. Predicted to be involved in peptidyl-L-cysteine S-palmitoylation and protein targeting to membrane. Predicted to be located in membrane. Predicted to be integral component of membrane. Predicted to be active in Golgi apparatus and endoplasmic reticulum. Is expressed in oocyte. Orthologous to human ZDHHC14 (zinc finger DHHC-type palmitoyltransferase 14).

**Product:**

1mg/ml in PBS with 0.02% sodium azide, 50% glycerol, pH7.2

**Molecular Weight:**

53kDa

**Swiss-Prot:**

Q8BQQ1

**Purification&Purity:**

The antibody was affinity-purified from rabbit antiserum by affinity-chromatography using epitope-specific immunogen and the purity is > 95% (by SDS-PAGE).

**Applications:**

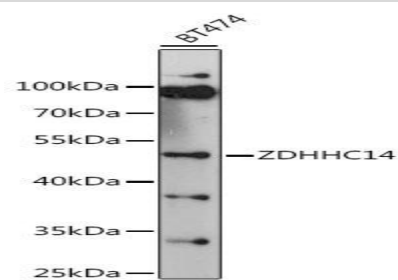
WB, 1:500 - 1:2000

**Storage&Stability:**

Store at 4 °C short term. Aliquot and store at -20 °C long term. Avoid freeze-thaw cycles.

**Modification:**

Unmodification

**DATA:**

Western blot analysis of extracts of BT474 cells, using ZDHHC14 antibody at 1:1000 dilution. Secondary antibody: HRP Goat Anti-Rabbit IgG at 1:10000 dilution. Lysates/proteins: 25ug per lane. Blocking buffer: 3% nonfat dry milk in TBST. Detection: ECL Basic Kit. Exposure time: 90s.

**Note:**

For research use only, not for use in diagnostic procedure.

**Bioworld Technology, Inc.**

Add: 1660 South Highway 100, Suite 500 St. Louis Park, MN 55416, USA.

Email: [info@bioworld.com](mailto:info@bioworld.com)

Tel: 6123263284

Fax: 6122933841

**Bioworld technology, co. Ltd.**

Add: No 9, weidi road Qixia District Nanjing, 210046, P. R. China.

Email: [info@biogot.com](mailto:info@biogot.com)

Tel: 0086-025-68037686

Fax: 0086-025-68035151