

HB-EGF polyclonal antibody

Catalog: BS77018

Host: Rabbit

Reactivity: Human, Mouse, Rat

BackGround:

Heparin-binding EGF-like growth factor (HB-EGF) is a 12-16 kDa member of the epidermal growth factor (EGF) family. It possesses an EGF-like domain, and a heparin-binding motif. Mature HB-EGF is a soluble peptide that arises from proteolytic processing of the transmembrane form. Human HB-EGF shows 76% and 73% amino acid sequence identity with rat and mouse HB-EGF, respectively. It is required for normal cardiac valve formation and normal heart function, promotes smooth muscle cell proliferation. It may be involved in macrophage-mediated cellular proliferation; it is mitogenic for fibroblasts, but not endothelial cells. HB-EGF is classified as a group 2 ErbB ligand based on its ability to activate both the EGF/ErbB1 and ErbB4 receptors. Activity associated with ErbB4 binding appears to be limited to non-mitogenic actions, while EGFR binding induces both mitogenic and non-mitogenic activity.

Product:

1mg/ml in PBS with 0.02% sodium azide, 50% glycerol, pH7.2

Molecular Weight:

23KDa

Swiss-Prot:

Q99075

Purification&Purity:

The antibody was affinity-purified from rabbit antiserum by affinity-chromatography using epitope-specific immunogen and the purity is > 95% (by SDS-PAGE).

Applications:

WB, 1:500 - 1:2000 | IF/ICC, 1:50 - 1:200

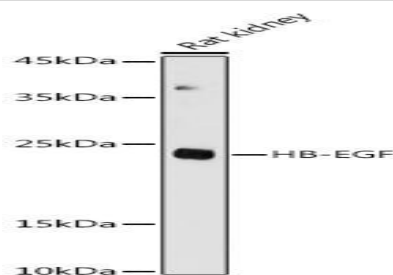
Storage&Stability:

Store at 4 °C short term. Aliquot and store at -20 °C long term. Avoid freeze-thaw cycles.

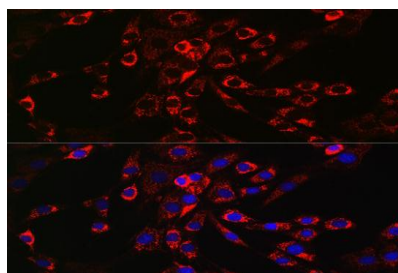
Modification:

Unmodification

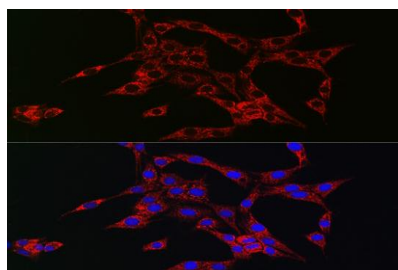
DATA:



Western blot analysis of extracts of Rat kidney, using HB-EGF antibody at 1:1000 dilution. Secondary antibody: HRP Goat Anti-Rabbit IgG at 1:10000 dilution. Lysates/proteins: 25ug per lane. Blocking buffer: 3% nonfat dry milk in TBST. Detection: ECL Basic Kit. Exposure time: 180s.



Immunofluorescence analysis of NIH/3T3 cells using HB-EGF Rabbit pAb at dilution of 1:150. Blue: DAPI for nuclear staining.



Immunofluorescence analysis of PC-12 cells using HB-EGF Rabbit pAb at dilution of 1:150. Blue: DAPI for nuclear staining.

Note:

For research use only, not for use in diagnostic procedure.

Bioworld Technology, Inc.

Add: 1660 South Highway 100, Suite 500 St. Louis Park, MN 55416, USA.

Email: info@bioworld.com

Tel: 6123263284

Fax: 6122933841

Bioworld technology, co. Ltd.

Add: No 9, weidi road Qixia District Nanjing, 210046, P. R. China.

Email: info@biogot.com

Tel: 0086-025-68037686

Fax: 0086-025-68035151



PRODUCT DATA SHEET

Bioworld Technology, Inc.

Bioworld Technology, Inc.

Add: 1660 South Highway 100, Suite 500 St. Louis Park,
MN 55416, USA.

Email: info@bioworld.com

Tel: 6123263284

Fax: 6122933841

Bioworld technology, co. Ltd.

Add: No 9, weidi road Qixia District Nanjing, 210046,
P. R. China.

Email: info@biogot.com

Tel: 0086-025-68037686

Fax: 0086-025-68035151