

ADORA2B polyclonal antibody

Catalog: BS77908

Host: Rabbit

Reactivity: Human, Mouse, Rat

BackGround:

This gene encodes an adenosine receptor that is a member of the G protein-coupled receptor superfamily. This integral membrane protein stimulates adenylate cyclase activity in the presence of adenosine. This protein also interacts with netrin-1, which is involved in axon elongation. The gene is located near the Smith-Magenis syndrome region on chromosome 17.

Product:

Rabbit IgG, 1mg/ml in PBS with 0.02% sodium azide, 50% glycerol, pH7.2

Molecular Weight:

~ 50 kDa

Swiss-Prot:

P29275

Purification&Purity:

The antibody was affinity-purified from rabbit antiserum by affinity-chromatography using epitope-specific immunogen and the purity is > 95% (by SDS-PAGE).

Applications:

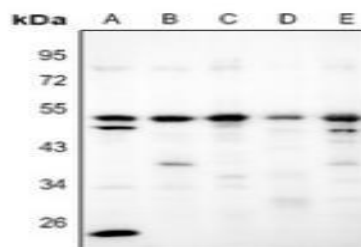
WB, 1:500 - 1:1000 | IHC, 1:100 - 1:200 | IF/ICC, 1:100 - 1:500

Storage&Stability:

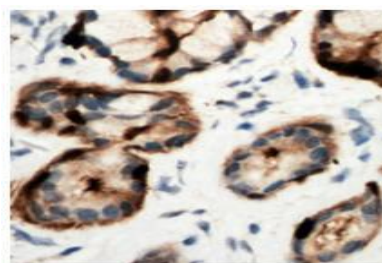
Store at 4 °C short term. Aliquot and store at -20 °C long term. Avoid freeze-thaw cycles.

Specificity:

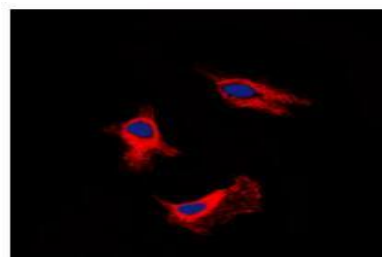
ADORA2B polyclonal antibody detects endogenous levels of ADORA2B protein.

DATA:

Western blot analysis of ADORA2B expression in HCT116 (A), A375 (B), EC9706 (C), CT26 (D), C6 (E) whole cell lysates.



Immunohistochemical analysis of ADORA2B staining in human pancreas formalin fixed paraffin embedded tissue section.



Immunofluorescent analysis of ADORA2B staining in SHSY5Y cells.

Note:

For research use only, not for use in diagnostic procedure.

Bioworld Technology, Inc.

Add: 1660 South Highway 100, Suite 500 St. Louis Park, MN 55416, USA.

Email: info@bioworld.com

Tel: 6123263284

Fax: 6122933841

Bioworld technology, co. Ltd.

Add: No 9, weidi road Qixia District Nanjing, 210046, P. R. China.

Email: info@biogot.com

Tel: 0086-025-68037686

Fax: 0086-025-68035151