

TCF4/TCF7L2 polyclonal antibody

Catalog: BS78103

Host: Rabbit

Reactivity: Human

BackGround:

This gene encodes a high mobility group (HMG) box-containing transcription factor that plays a key role in the Wnt signaling pathway. The protein has been implicated in blood glucose homeostasis. Genetic variants of this gene are associated with increased risk of type 2 diabetes. Several transcript variants encoding multiple different isoforms have been found for this gene. [provided by RefSeq, Oct 2010]

Product:

1mg/ml in PBS with 0.02% sodium azide, 50% glycerol, pH7.2

Molecular Weight:

~ 68 kDa

Swiss-Prot:

Q9NQB0

Purification&Purity:

The antibody was affinity-purified from rabbit antiserum by affinity-chromatography using epitope-specific immunogen and the purity is > 95% (by SDS-PAGE).

Applications:

WB:1:500-1:1,000

IHC:1:50-1:100

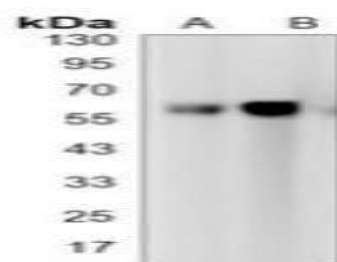
IP:1:10-1:50

Storage&Stability:

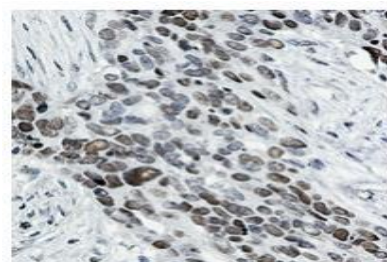
Store at 4°C short term. Aliquot and store at -20°C long term. Avoid freeze-thaw cycles.

Specificity:

TCF4/TCF7L2 polyclonal antibody detects endogenous levels of TCF4/TCF7L2 protein.

DATA:

Western blot analysis of TCF4/TCF7L2 expression in K562 (A), HeLa (B) whole cell lysates.



Immunohistochemical analysis of TCF4/TCF7L2 staining in human cholangiocarcinoma formalin fixed paraffin embedded tissue section.

Note:

For research use only, not for use in diagnostic procedure.

Bioworld Technology, Inc.

Add: 1660 South Highway 100, Suite 500 St. Louis Park, MN 55416, USA.

Email: info@bioworld.com

Tel: 6123263284

Fax: 6122933841

Bioworld technology, co. Ltd.

Add: No 9, weidi road Qixia District Nanjing, 210046, P. R. China.

Email: info@biogot.com

Tel: 0086-025-68037686

Fax: 0086-025-68035151