

NBS1/NBN polyclonal antibody

Catalog: BS78190

Host: Rabbit

Reactivity: Human, Mouse, Rat

BackGround:

Mutations in this gene are associated with Nijmegen breakage syndrome, an autosomal recessive chromosomal instability syndrome characterized by microcephaly, growth retardation, immunodeficiency, and cancer predisposition. The encoded protein is a member of the MRE11/RAD50 double-strand break repair complex which consists of 5 proteins. This gene product is thought to be involved in DNA double-strand break repair and DNA damage-induced checkpoint activation.

Product:

1mg/ml in PBS with 0.02% sodium azide, 50% glycerol, pH7.2

Molecular Weight:

~ 95 kDa

Swiss-Prot:

O60934

Purification&Purity:

The antibody was affinity-purified from rabbit antiserum by affinity-chromatography using epitope-specific immunogen and the purity is > 95% (by SDS-PAGE).

Applications:

WB, 1:500 - 1:1000|IF/ICC, 1:100 - 1:500|IP, 1:10 - 1:100|IHC, 1:100 - 1:200

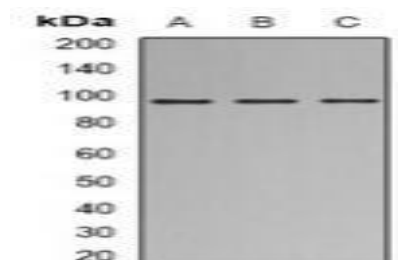
Storage&Stability:

Store at 4 °C short term. Aliquot and store at -20 °C long term. Avoid freeze-thaw cycles.

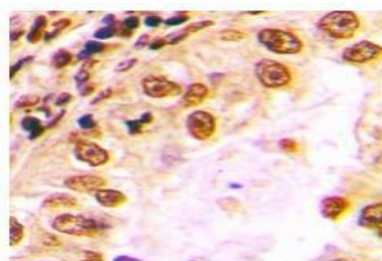
Specificity:

NBS1/NBN polyclonal antibody detects endogenous levels of NBS1/NBN protein.

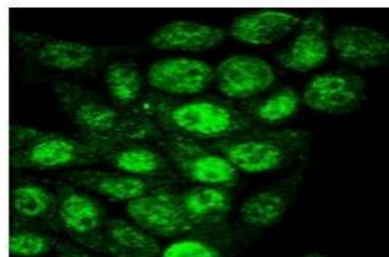
DATA:



Western blot analysis of Nibrin expression in HEK293T (A), A549 (B), Jurkat (C) whole cell lysates.



Immunohistochemical analysis of Nibrin staining in human lung cancer formalin fixed paraffin embedded tissue section.



Immunofluorescent analysis of Nibrin staining in HeLa cells.

Note:

For research use only, not for use in diagnostic procedure.

Bioworld Technology, Inc.

Add: 1660 South Highway 100, Suite 500 St. Louis Park, MN 55416, USA.

Email: info@bioworld.com

Tel: 6123263284

Fax: 6122933841

Bioworld technology, co. Ltd.

Add: No 9, weidi road Qixia District Nanjing, 210046, P. R. China.

Email: info@biogot.com

Tel: 0086-025-68037686

Fax: 0086-025-68035151