

SERPINA6 polyclonal antibody

Catalog: BS7868

Host: Rabbit

Reactivity: Human

BackGround:

The serine proteinase inhibitors (serpins) comprise a superfamily of proteins with a diverse set of functions, including the control of blood coagulation, complement activation, programmed cell death and tissue development. SerpinA6, also known as CBG or Transcortin, is a 405 amino acid α -globulin secreted protein that belongs to the serpin family. Synthesized in the liver and present in glyco-corticoid responsive cells, SerpinA6 functions as the primary transport protein for progestins and glucocorticoids within the blood. Additionally, SerpinA6 has corticosteroid-binding properties through which it can regulate the physiological binding of serum cortisol within the cell. Defects in the gene encoding SerpinA6 are the cause of corticosteroid-binding globulin deficiency (CBG deficiency), a rare disorder characterized by reduced corticosteroid-binding rates that result in hypo/hypertension and muscle fatigue.

Product:

Rabbit IgG, 1mg/ml in PBS with 0.02% sodium azide, 50% glycerol, pH7.2

Molecular Weight:

~ 45 kDa

Swiss-Prot:

P08185

Purification&Purity:

The antibody was affinity-purified from rabbit antiserum by affinity-chromatography using epitope-specific immunogen and the purity is > 95% (by SDS-PAGE).

Applications:

WB 1:500 - 1:2000

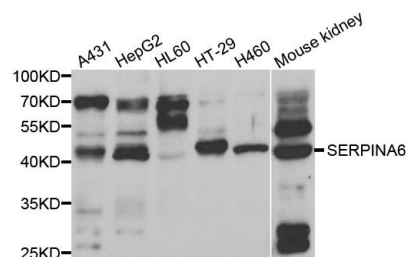
Storage&Stability:

Store at 4 °C short term. Aliquot and store at -20 °C long term. Avoid freeze-thaw cycles.

Specificity:

SERPINA6 polyclonal antibody detects endogenous levels of SERPINA6 protein.

DATA:



WesternBlot (WB) analysis of SERPINA6 polyclonal antibody

Note:

For research use only, not for use in diagnostic procedure.

Bioworld Technology, Inc.

Add: 1660 South Highway 100, Suite 500 St. Louis Park, MN 55416, USA.

Email: info@bioworld.com

Tel: 6123263284

Fax: 6122933841

Bioworld technology, co. Ltd.

Add: No 9, weidi road Qixia District Nanjing, 210046, P. R. China.

Email: info@biogot.com

Tel: 0086-025-68037686

Fax: 0086-025-68035151