

## PRMT2 polyclonal antibody

Catalog: BS7890

Host: Rabbit

Reactivity: Human, Mouse, Rat

### Background:

PRMT2 (Protein arginine N-methyltransferase 2) is a 433 amino acid protein encoded by the human gene PRMT2. PRMT2 belongs to the protein arginine N-methyltransferase family and contains one SH3 domain. The primary function of protein methyltransferases is the post-translational methylation of arginine residues. The PRMT family of proteins contains related putative methyltransferase domains that modify chromatin and regulate cellular transcription. Some family members, PRMT1 and PRMT4, show transcriptional modulation and intracellular signaling. Through a highly conserved S-adenosylmethionine-binding domain, PRMT2 inhibits NF-kappaB-dependent transcription and promotes apoptosis. PRMT2 has this effect by blocking nuclear export of IkappaB-alpha through a leptomycin-sensitive pathway, which increases nuclear IkappaB-alpha and decreases NF-kappaB DNA binding. PRMT2 also renders cells susceptible to apoptosis by cytokines or cytotoxic drugs.

### Product:

Rabbit IgG, 1mg/ml in PBS with 0.02% sodium azide, 50% glycerol, pH7.2

### Molecular Weight:

~ 49 kDa

### Swiss-Prot:

P55345

### Purification&Purity:

The antibody was affinity-purified from rabbit antiserum by affinity-chromatography using epitope-specific immunogen and the purity is > 95% (by SDS-PAGE).

### Applications:

WB: 1:500~1:2000

IHC/IF: 1:50~1:200

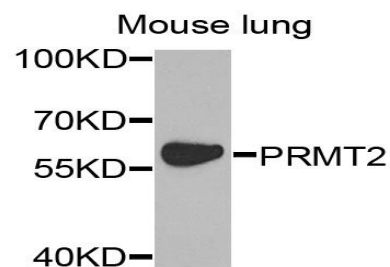
### Storage&Stability:

Store at 4 °C short term. Aliquot and store at -20 °C long term. Avoid freeze-thaw cycles.

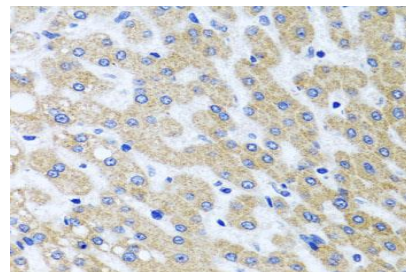
### Specificity:

PRMT2 polyclonal antibody detects endogenous levels of PRMT2 protein.

### DATA:



Western blot analysis of extracts of mouse lung, using PRMT2 antibody.



Immunohistochemistry of paraffin-embedded human liver injury using PRMT2 antibody at dilution of 1:100 (x40 lens).

Immunofluorescence analysis of HeLa cell using PRMT2 antibody.

### Note:

For research use only, not for use in diagnostic procedure.

### Bioworld Technology, Inc.

Add: 1660 South Highway 100, Suite 500 St. Louis Park, MN 55416, USA.

Email: [info@bioworld.com](mailto:info@bioworld.com)

Tel: 6123263284

Fax: 6122933841

### Bioworld technology, co. Ltd.

Add: No 9, weidi road Qixia District Nanjing, 210046, P. R. China.

Email: [info@biogot.com](mailto:info@biogot.com)

Tel: 0086-025-68037686

Fax: 0086-025-68035151