

**Collagen I/COL1A1 polyclonal antibody**

Catalog: BS79834

Host: Rabbit

Reactivity: Human, Mouse, Rat

**BackGround:**

This gene encodes the pro- $\alpha 1$  chains of type I collagen whose triple helix comprises two  $\alpha 1$  chains and one  $\alpha 2$  chain. Type I is a fibril-forming collagen found in most connective tissues and is abundant in bone, cornea, dermis and tendon. Mutations in this gene are associated with osteogenesis imperfecta types I-IV, Ehlers-Danlos syndrome type VIIA, Ehlers-Danlos syndrome Classical type, Caffey Disease and idiopathic osteoporosis. Reciprocal translocations between chromosomes 17 and 22, where this gene and the gene for platelet-derived growth factor beta are located, are associated with a particular type of skin tumor called dermatofibrosarcoma protuberans, resulting from unregulated expression of the growth factor. Two transcripts, resulting from the use of alternate polyadenylation signals, have been identified for this gene.

**Product:**

Rabbit IgG, 1mg/ml in PBS with 0.02% sodium azide, 50% glycerol, pH7.2

**Molecular Weight:**

140KDa/220KDa

**Swiss-Prot:**

P02452

**Purification&Purity:**

The antibody was affinity-purified from rabbit antiserum by affinity-chromatography using epitope-specific immunogen and the purity is > 95% (by SDS-PAGE).

**Applications:**

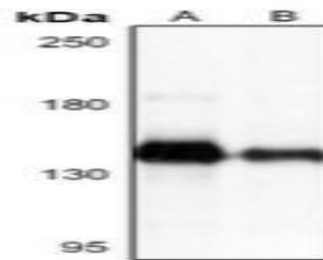
WB, 1:500 - 1:1000 | IF/ICC, 1:50 - 1:200 | IHC, 1:50 - 1:200

**Storage&Stability:**

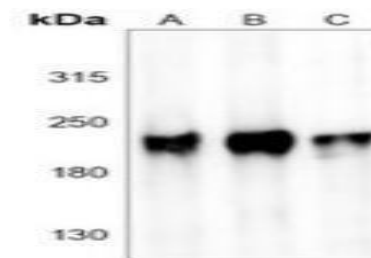
Store at 4 °C short term. Aliquot and store at -20 °C long term. Avoid freeze-thaw cycles.

**Specificity:**

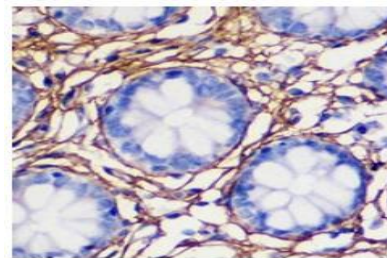
Collagen I/COL1A1 Polyclonal Antibody detects endogenous levels of Collagen I/COL1A1 protein.

**DATA:**

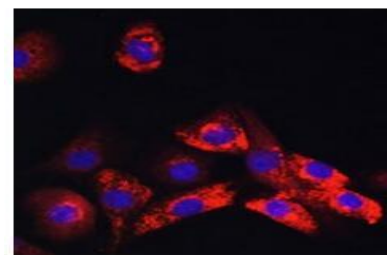
Western blot analysis of Collagen I/COL1A1 expression in HeLa (A), EC9706 (B) whole cell lysates.



Western blot analysis of Collagen I/COL1A1 expression in Panc1 (A), 3T3L1 (B), rat uterus (C) whole cell lysates.



Immunohistochemical analysis of Collagen I/COL1A1 staining in human lung formalin fixed paraffin embedded tissue section.



Immunofluorescent analysis of Collagen I/COL1A1 staining in NIH3T3

**Bioworld Technology, Inc.**

Add: 1660 South Highway 100, Suite 500 St. Louis Park, MN 55416, USA.

Email: [info@bioworld.com](mailto:info@bioworld.com)

Tel: 6123263284

Fax: 6122933841

**Bioworld technology, co. Ltd.**

Add: No 9, weidi road Qixia District Nanjing, 210046, P. R. China.

Email: [info@biogot.com](mailto:info@biogot.com)

Tel: 0086-025-68037686

Fax: 0086-025-68035151



## PRODUCT DATA SHEET

Bioworld Technology, Inc.

cells.

For research use only, not for use in diagnostic procedure.

Note:

---

### **Bioworld Technology, Inc.**

**Add:** 1660 South Highway 100, Suite 500 St. Louis Park,  
MN 55416, USA.

**Email:** [info@bioworld.com](mailto:info@bioworld.com)

**Tel:** 6123263284

**Fax:** 6122933841

### **Bioworld technology, co. Ltd.**

**Add:** No 9, weidi road Qixia District Nanjing, 210046,  
P. R. China.

**Email:** [info@biogot.com](mailto:info@biogot.com)

**Tel:** 0086-025-68037686

**Fax:** 0086-025-68035151