

LSM4 polyclonal antibody

Catalog: BS8083

Host: Rabbit

Reactivity: Human, Mouse

Background:

Sm and Sm-like (LSm) proteins form donut shaped heptameric complexes that are involved in various steps of RNA metabolism. Lsm proteins facilitate RNA protein interactions and structural changes that are required during ribosomal subunit assembly. LSM4, also called U6 snRNA-associated Sm-like protein or Glycine-rich protein (GRP), binds specifically to the 3'-terminal U-tract of U6 snRNA. Human LSM4 localizes to the cytoplasm in small, discrete foci. These foci are also the localization site for the mRNA decapping enzyme Dcp1/2 and the exonuclease, Xrn1.

Product:

Rabbit IgG, 1mg/ml in PBS with 0.02% sodium azide, 50% glycerol, pH7.2

Molecular Weight:

~ 15 kDa

Swiss-Prot:

Q9Y4Z0

Purification&Purity:

The antibody was affinity-purified from rabbit antiserum by affinity-chromatography using epitope-specific immunogen and the purity is > 95% (by SDS-PAGE).

Applications:

WB 1:500 - 1:1000

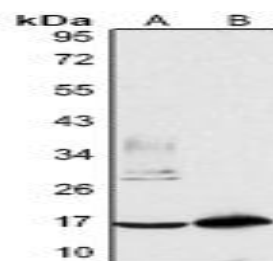
Storage&Stability:

Store at 4 °C short term. Aliquot and store at -20 °C long term. Avoid freeze-thaw cycles.

Specificity:

LSM4 polyclonal antibody detects endogenous levels of LSM4 protein.

DATA:



Western blot analysis of LSM4 expression in K562 (A), NIH3T3 (B) whole cell lysates.

Note:

For research use only, not for use in diagnostic procedure.

Bioworld Technology, Inc.

Add: 1660 South Highway 100, Suite 500 St. Louis Park, MN 55416, USA.

Email: info@bioworld.com

Tel: 6123263284

Fax: 6122933841

Bioworld technology, co. Ltd.

Add: No 9, weidi road Qixia District Nanjing, 210046, P. R. China.

Email: info@biogot.com

Tel: 0086-025-68037686

Fax: 0086-025-68035151