

MDH2 polyclonal antibody

Catalog: BS8109

Host: Rabbit

Reactivity: Human, Mouse

BackGround:

MDH2 (malate dehydrogenase, NAD mitochondrial), also known as MDH, MOR1 or M-MDH, is a 338 amino acid that belongs to the LDH/MDH superfamily. MDH2 localizes to the mitochondria and may play a critical role in the malate-aspartate shuttle that operates in the metabolic coordination between cytosol and mitochondria. MDH2 utilizes the NAD/NADH cofactor system in the citric acid cycle to catalyze the reversible oxidation of malate to oxaloacetate. Oxaloacetate is involved in many important metabolic pathways including amino acid synthesis, gluconeogenesis and facilitation of the exchange of metabolites between cytoplasm and subcellular organelles.

Product:

Rabbit IgG, 1mg/ml in PBS with 0.02% sodium azide, 50% glycerol, pH7.2

Molecular Weight:

~ 36 kDa

Swiss-Prot:

P40926

Purification&Purity:

The antibody was affinity-purified from rabbit antiserum by affinity-chromatography using epitope-specific im-

munogen and the purity is > 95% (by SDS-PAGE).

Applications:

WB: 1:500~1:2000

IHC: 1:50~1:200

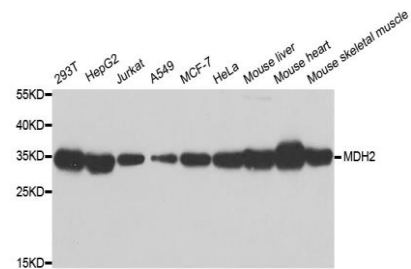
Storage&Stability:

Store at 4 °C short term. Aliquot and store at -20 °C long term. Avoid freeze-thaw cycles.

Specificity:

MDH2 polyclonal antibody detects endogenous levels of MDH2 protein.

DATA:



WesternBlot (WB) analysis of MDH2 polyclonal antibody

Note:

For research use only, not for use in diagnostic procedure.

Bioworld Technology, Inc.

Add: 1660 South Highway 100, Suite 500 St. Louis Park, MN 55416, USA.

Email: info@bioworld.com

Tel: 6123263284

Fax: 6122933841

Bioworld technology, co. Ltd.

Add: No 9, weidi road Qixia District Nanjing, 210046, P. R. China.

Email: info@biogot.com

Tel: 0086-025-68037686

Fax: 0086-025-68035151