

PENK polyclonal antibody

Catalog: BS8113

Host: Rabbit

Reactivity: Human, Mouse, Rat

Background:

The Proenkephalin precursor proteins are secreted proteins belonging to the opioid neuropeptide precursor family. The proenkephalin proteins are proteolytically processed to form active secreted opioid peptides which function as ligands for the κ -type of opioid receptor. Proenkephalin A precursor contains Synenkephalin, Leu-enkephalin and Met-enkephalin processed active peptides while the Proenkephalin B precursor contains β -neoendorphin, Dynorphin, Leumorphin, Leu-enkephalin and Rimorphin processed active peptides. β -endorphin and Met-enkephalin are endogenous opiates while ACTH is crucial for adrenal gland stimulation to release cortisol. MSH increases Melanin production in melanocytes which leads to an increase in skin pigmentation. Leumorphin may be important in apoptosis prevention by being involved in the MAP-K and PI 3-K pathways.

Product:

Rabbit IgG, 1mg/ml in PBS with 0.02% sodium azide, 50% glycerol, pH7.2

Molecular Weight:

~ 36 kDa

Swiss-Prot:

P01210

Purification&Purity:

The antibody was affinity-purified from rabbit antiserum by affinity-chromatography using epitope-specific immunogen and the purity is > 95% (by SDS-PAGE).

Applications:

WB: 1:500~1:2000

IHC: 1:50~1:200

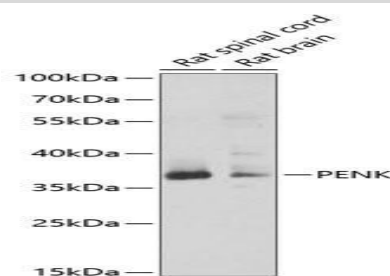
Storage&Stability:

Store at 4 °C short term. Aliquot and store at -20 °C long term. Avoid freeze-thaw cycles.

Specificity:

PENK polyclonal antibody detects endogenous levels of PENK protein.

DATA:



WesternBlot (WB) analysis of PENK polyclonal antibody

Note:

For research use only, not for use in diagnostic procedure.

Bioworld Technology, Inc.

Add: 1660 South Highway 100, Suite 500 St. Louis Park, MN 55416, USA.

Email: info@bioworld.com

Tel: 6123263284

Fax: 6122933841

Bioworld technology, co. Ltd.

Add: No 9, weidi road Qixia District Nanjing, 210046, P. R. China.

Email: info@biogot.com

Tel: 0086-025-68037686

Fax: 0086-025-68035151