

PHF17 polyclonal antibody

Catalog: BS8143

Host: Rabbit

Reactivity: Human, Mouse

BackGround:

Jade-1, also known as PHF17 (PHD finger protein 17), is an 842 amino acid protein that localizes to both the cytoplasm and the nucleus and contains two PHD-type zinc fingers. Expressed at high levels in kidney tissue and also present in heart, pancreas and liver, Jade-1 functions as a transcriptional coactivator that, via its PHD zinc fingers, promotes the TIP30-dependent acetylation of Histone H4. Additionally, Jade-1 is thought to promote apoptosis and is down-regulated in renal carcinoma cells, suggesting a possible role in tumor suppression. Three isoforms of Jade-1, two of which are designated JADE1L and JADE1S, are produced via alternative splicing events. The gene encoding Jade-1 maps to human chromosome 4, which encodes nearly 6% of the human genome and has the largest gene deserts (regions of the genome with no protein encoding genes) of all of the human chromosomes.

Product:

Rabbit IgG, 1mg/ml in PBS with 0.02% sodium azide, 50% glycerol, pH7.2

Molecular Weight:

~ 108 kDa

Swiss-Prot:

Q6IE81

Purification&Purity:

The antibody was affinity-purified from rabbit antiserum by affinity-chromatography using epitope-specific immunogen and the purity is > 95% (by SDS-PAGE).

Applications:

WB: 1:500~1:2000

IF: 1:50~1:200

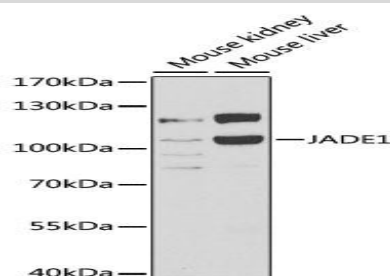
Storage&Stability:

Store at 4 °C short term. Aliquot and store at -20 °C long term. Avoid freeze-thaw cycles.

Specificity:

PHF17 polyclonal antibody detects endogenous levels of PHF17 protein.

DATA:



WesternBlot (WB) analysis of PHF17 polyclonal antibody

Note:

For research use only, not for use in diagnostic procedure.

Bioworld Technology, Inc.

Add: 1660 South Highway 100, Suite 500 St. Louis Park, MN 55416, USA.

Email: info@bioworld.com

Tel: 6123263284

Fax: 6122933841

Bioworld technology, co. Ltd.

Add: No 9, weidi road Qixia District Nanjing, 210046, P. R. China.

Email: info@biogol.com

Tel: 0086-025-68037686

Fax: 0086-025-68035151