

## ELF3 polyclonal antibody

Catalog: BS8164

Host: Rabbit

Reactivity: Human,Rat

**BackGround:**

ESE-1, a member of the Ets family of transcription factors, critically regulates epithelial cell differentiation and mediates vascular inflammation. ESE-1 is strongly expressed in vascular endothelium and smooth muscle cells where it is induced in response to inflammatory cytokines and lipopolysaccharides, interacts with NF-KappaB to induce nitric oxide synthase, and is induced during terminal differentiation of epidermal and primary keratinocytes. In addition, ESE-1 is upregulated upon differentiation of corneal epithelium and interacts with Sp1 and AP-1 proteins to induce squamous differentiation marker expression in bronchial epithelial cells.

**Product:**

Rabbit IgG, 1mg/ml in PBS with 0.02% sodium azide, 50% glycerol, pH7.2

**Molecular Weight:**

~ 41 kDa

**Swiss-Prot:**

P78545

**Purification&Purity:**

The antibody was affinity-purified from rabbit antiserum by affinity-chromatography using epitope-specific immunogen and the purity is > 95% (by SDS-PAGE).

**Applications:**

WB 1:500 - 1:2000

IHC 1:50 - 1:200

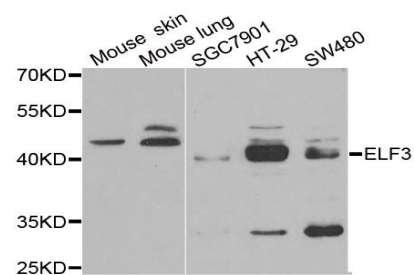
IF 1:10 - 1:100

**Storage&Stability:**

Store at 4 °C short term. Aliquot and store at -20 °C long term. Avoid freeze-thaw cycles.

**Specificity:**

ELF3 polyclonal antibody detects endogenous levels of ELF3 protein.

**DATA:**

WesternBlot (WB) analysis of ELF3 polyclonal antibody

**Note:**

For research use only, not for use in diagnostic procedure.

**Bioworld Technology, Inc.**

Add: 1660 South Highway 100, Suite 500 St. Louis Park, MN 55416, USA.

Email: [info@bioworld.com](mailto:info@bioworld.com)

Tel: 6123263284

Fax: 6122933841

**Bioworld technology, co. Ltd.**

Add: No 9, weidi road Qixia District Nanjing, 210046, P. R. China.

Email: [info@biogot.com](mailto:info@biogot.com)

Tel: 0086-025-68037686

Fax: 0086-025-68035151