

## KLF10 polyclonal antibody

Catalog: BS8200

Host: Rabbit

Reactivity: Human

### BackGround:

Originally isolated from osteoblastic cells, the TGF $\beta$ -inducible early gene-1 (TIEG1) is a Krupel-like zinc finger transcription factor-encoding gene which regulates cellular growth and differentiation. TIEG1 is regulated as an early response gene by TGF $\beta$ 1. It is expressed in both acinar and ductular epithelial cells from exocrine pancreas and may serve as an early response gene in pancreatic cell lines. Further, overexpression of TIEG1 in TGF $\beta$ -sensitive epithelial cells induces apoptosis. TIEG1 and EGRA are expressed from alternate promoters of the same gene. Both are highly expressed in human fetal osteoblast cells. TIEG1 is additionally expressed at high levels in PBLs, spleen and colon, and at lower levels in thymus, small intestine, ovary, prostate and skeletal muscle. The nuclear TIEG2 protein, which shares significant homology with TIEG1, was originally isolated from globin-expressing human fetal erythroid cells. TIEG2 is also expressed in fetal liver. Overexpression of TIEG2 in cultured epithelial cells inhibits cellular proliferation. TIEG2 expression is upregulated by TGF $\beta$ 1 and serum deprivation.

### Product:

Rabbit IgG, 1mg/ml in PBS with 0.02% sodium azide, 50% glycerol, pH7.2

### Molecular Weight:

~ 53 kDa

### Swiss-Prot:

Q13118

### Purification&Purity:

The antibody was affinity-purified from rabbit antiserum by affinity-chromatography using epitope-specific immunogen and the purity is > 95% (by SDS-PAGE).

### Applications:

WB: 1:500~1:2000

IF: 1:50~1:200

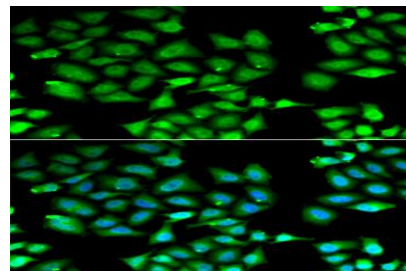
### Storage&Stability:

Store at 4 °C short term. Aliquot and store at -20 °C long term. Avoid freeze-thaw cycles.

### Specificity:

KLF10 polyclonal antibody detects endogenous levels of KLF10 protein.

### DATA:



Immunofluorescence analysis of A549 cell using KLF10 antibody. Blue: DAPI for nuclear staining.

### Note:

For research use only, not for use in diagnostic procedure.

### Bioworld Technology, Inc.

Add: 1660 South Highway 100, Suite 500 St. Louis Park, MN 55416, USA.

Email: [info@bioworld.com](mailto:info@bioworld.com)

Tel: 6123263284

Fax: 6122933841

### Bioworld technology, co. Ltd.

Add: No 9, weidi road Qixia District Nanjing, 210046, P. R. China.

Email: [info@biogot.com](mailto:info@biogot.com)

Tel: 0086-025-68037686

Fax: 0086-025-68035151