

TPD52L1 polyclonal antibody

Catalog: BS8203

Host: Rabbit

Reactivity: Human

BackGround:

The cell commits to dividing during the G2/M phase transition, and the timing of mitotic entry is tightly regulated to guarantee correct chromosome segregation. D53, also referred to as tumor protein D52-like 1 (TPD52L1), is a coiled-coil motif-bearing member of the D52 tumor protein family. D53 interacts with 14-3-3, a negative regulator of the G2/M transition, in breast cancer cells. Expression of D53 is highly upregulated at the G2/M phase transition in breast cancer cell lines, and deregulated expression of this protein can adversely affect the completion of mitosis. D53 may function as a signaling intermediate and/or regulator of vesicle trafficking and cell proliferation.

Product:

Rabbit IgG, 1mg/ml in PBS with 0.02% sodium azide, 50% glycerol, pH7.2

Molecular Weight:

~ 22 kDa

Swiss-Prot:

Q16890

Purification&Purity:

The antibody was affinity-purified from rabbit antiserum by affinity-chromatography using epitope-specific im-

munogen and the purity is > 95% (by SDS-PAGE).

Applications:

IF 1:20 - 1:50

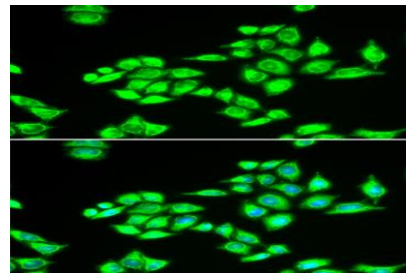
Storage&Stability:

Store at 4 °C short term. Aliquot and store at -20 °C long term. Avoid freeze-thaw cycles.

Specificity:

TPD52L1 polyclonal antibody detects endogenous levels of TPD52L1 protein.

DATA:



Immunofluorescence analysis of U2OS cell using TPD52L1 antibody.

Blue: DAPI for nuclear staining.

Note:

For research use only, not for use in diagnostic procedure.

Bioworld Technology, Inc.

Add: 1660 South Highway 100, Suite 500 St. Louis Park, MN 55416, USA.

Email: info@bioworld.com

Tel: 6123263284

Fax: 6122933841

Bioworld technology, co. Ltd.

Add: No 9, weidi road Qixia District Nanjing, 210046, P. R. China.

Email: info@biogot.com

Tel: 0086-025-68037686

Fax: 0086-025-68035151