

SEPHS1 polyclonal antibody

Catalog: BS8228

Host: Rabbit

Reactivity: Human, Mouse, Rat

Background:

SEPHS1 (selenophosphate synthetase 1), also known as SELD, SPS or SPS1, is a 392 amino acid member of the selenophosphate synthetase 1 family and is one of two mammalian homologs of the eubacteria selenophosphate synthetase protein SelD. SelD is an enzyme that generates the selenium donor for the biosynthesis of selenocysteine, an amino acid that is co-translationally incorporated into selenoproteins at in-frame UGA codons. SEPHS1 has a similar function to SelD and specifically catalyzes the formation of selenophosphate (the active selenium donor) from selenide, ATP and H₂O. Proper SEPHS1 function depends on a selenium salvage system that recycles L-selenocysteine, thereby providing the substrates for selenophosphate synthesis.

Product:

Rabbit IgG, 1mg/ml in PBS with 0.02% sodium azide, 50% glycerol, pH7.2

Molecular Weight:

~ 43 kDa

Swiss-Prot:

P49903

Purification&Purity:

The antibody was affinity-purified from rabbit antiserum by affinity-chromatography using epitope-specific im-

munogen and the purity is > 95% (by SDS-PAGE).

Applications:

WB 1:500 - 1:2000

IF 1:50 - 1:100

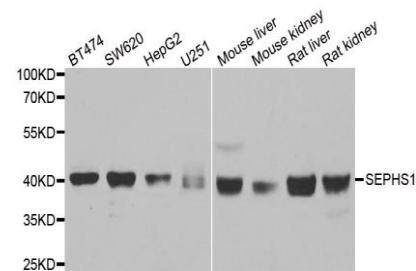
Storage&Stability:

Store at 4 °C short term. Aliquot and store at -20 °C long term. Avoid freeze-thaw cycles.

Specificity:

SEPHS1 polyclonal antibody detects endogenous levels of SEPHS1 protein.

DATA:



WesternBlot (WB) analysis of SEPHS1 polyclonal antibody

Note:

For research use only, not for use in diagnostic procedure.

Bioworld Technology, Inc.

Add: 1660 South Highway 100, Suite 500 St. Louis Park, MN 55416, USA.

Email: info@bioworld.com

Tel: 6123263284

Fax: 6122933841

Bioworld technology, co. Ltd.

Add: No 9, weidi road Qixia District Nanjing, 210046, P. R. China.

Email: info@biogot.com

Tel: 0086-025-68037686

Fax: 0086-025-68035151