

AIPL1 polyclonal antibody

Catalog: BS8232

Host: Rabbit

Reactivity: Human, Mouse, Rat

Background:

The inherited blindness associated protein, aryl hydrocarbon receptor interacting protein-like 1 (AIPL1), interacts with the cell cycle regulator protein NUB1. AIPL1 is crucial for protein folding and stabilization, as well as for protein trafficking. It localizes to the nucleus or cytoplasm and is highly expressed in the pineal gland and the retina. In the retina, AIPL1 is expressed in both developing cone and rod photoreceptors, but it is restricted to rod photoreceptors in the adult human retina. Defects in the gene encoding for AIPL1 can cause Leber congenital amaurosis type IV, an early-onset, inherited autosomal recessive disorder that results in childhood blindness.

Product:

1mg/ml in PBS with 0.1% Sodium Azide, 50% Glycerol.

Molecular Weight:

~ 44 kDa

Swiss-Prot:

Q9NZN9

Purification&Purity:

The antibody was affinity-purified from rabbit antiserum by affinity-chromatography using epitope-specific immunogen and the purity is > 95% (by SDS-PAGE).

Applications:

WB 1:500 - 1:2000

IF 1:50 - 1:200

Storage&Stability:

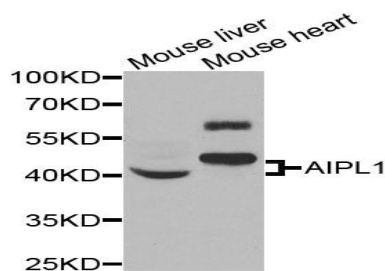
Store at 4 °C short term. Aliquot and store at -20 °C long

term. Avoid freeze-thaw cycles.

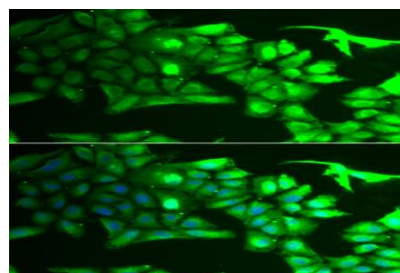
Specificity:

AIPL1 polyclonal antibody detects endogenous levels of AIPL1 protein.

DATA:



Western blot analysis of extracts of various cells, using AIPL1 antibody.



Immunofluorescence analysis of HeLa cell using AIPL1 antibody. Blue: DAPI for nuclear staining.

Note:

For research use only, not for use in diagnostic procedure.

Bioworld Technology, Inc.

Add: 1660 South Highway 100, Suite 500 St. Louis Park, MN 55416, USA.

Email: info@bioworld.com

Tel: 6123263284

Fax: 6122933841

Bioworld technology, co. Ltd.

Add: No 9, weidi road Qixia District Nanjing, 210046, P. R. China.

Email: info@biogot.com

Tel: 0086-025-68037686

Fax: 0086-025-68035151