

HAPLN1 polyclonal antibody

Catalog: BS8297

Host: Rabbit

Reactivity: Human, Mouse

BackGround:

The human cartilage link protein, also designated HAPLN1, is a member of the hyaluronan and proteoglycan link protein (HAPLN) family of proteins. This family contains 4 proteins with approximately 50% homology. The human cartilage link protein strengthens tissue architecture by using hyaluronic acid to stabilize the aggregates of proteoglycan monomers inside the extracellular cartilage matrix. It is widely expressed in most tissue types except brain tissue where, much like the other human cartilage link protein genes, it is weakly expressed. The HAPLN and the brain-specific CSPG genes, as well as other members of the link module superfamily, appear to have a common ancestral gene origin.

Product:

Rabbit IgG, 1mg/ml in PBS with 0.02% sodium azide, 50% glycerol, pH7.2

Molecular Weight:

~ 50 kDa

Swiss-Prot:

P10915

Purification&Purity:

The antibody was affinity-purified from rabbit antiserum by affinity-chromatography using epitope-specific immunogen and the purity is > 95% (by SDS-PAGE).

Applications:

WB: 1:500~1:2000

IHC: 1:50~1:200

IF: 1:50~1:200

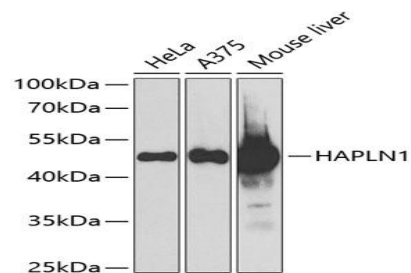
Storage&Stability:

Store at 4 °C short term. Aliquot and store at -20 °C long term. Avoid freeze-thaw cycles.

Specificity:

HAPLN1 polyclonal antibody detects endogenous levels of HAPLN1 protein.

DATA:



WesternBlot (WB) analysis of HAPLN1 polyclonal antibody

Note:

For research use only, not for use in diagnostic procedure.

Bioworld Technology, Inc.

Add: 1660 South Highway 100, Suite 500 St. Louis Park, MN 55416, USA.

Email: info@bioworld.com

Tel: 6123263284

Fax: 6122933841

Bioworld technology, co. Ltd.

Add: No 9, weidi road Qixia District Nanjing, 210046, P. R. China.

Email: info@biogot.com

Tel: 0086-025-68037686

Fax: 0086-025-68035151