

KIF1B polyclonal antibody

Catalog: BS8316

Host: Rabbit

Reactivity: Rat

BackGround:

The kinesins constitute a large family of microtubule-dependent motor proteins, which are responsible for the distribution of numerous organelles, vesicles and macromolecular complexes throughout the cell. Individual kinesin members play crucial roles in cell division, intracellular transport and membrane trafficking events including endocytosis and transcytosis. KIF1B is a member of the KIF1/Unc104 family of kinesin-like proteins that are involved in the transport of mitochondria or synaptic vesicles in axons. KIF1B is an amino-terminal-type motor protein that is ubiquitously expressed, with the most abundant levels in differentiated nerve cells. The human KIF1B gene maps to chromosome 1p36.2. Defects in axonal transport due to mutations at the KIF1B gene can underlie the human peripheral neuropathy phenotype. The mouse KIF1B gene generates an alternatively spliced transcript, which produces two isoforms.

Product:

0.01M TBS(pH7.4) with 1% BSA, 0.03% Proclin300 and 50% Glycerol.

Molecular Weight:

~ 204 kDa

Swiss-Prot:

O60333

Purification&Purity:

The antibody was affinity-purified from rabbit antiserum by affinity-chromatography using epitope-specific immunogen and the purity is > 95% (by SDS-PAGE).

Applications:

WB 1:500 - 1:2000

IHC 1:100 - 1:500

IF 1:100 - 1:500

ICC 1:100 - 1:500

ELISA 1:5000 - 1:10000

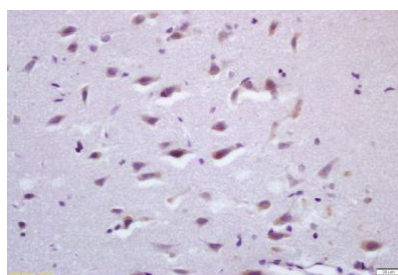
Storage&Stability:

Store at 4 °C short term. Aliquot and store at -20 °C long term. Avoid freeze-thaw cycles.

Specificity:

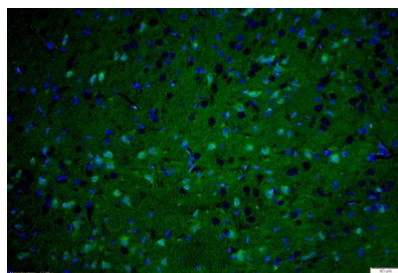
KIF1B polyclonal antibody detects endogenous levels of KIF1B protein.

DATA:



Tissue/cell: rat brain tissue; 4% Paraformaldehyde-fixed and paraffin-embedded;

Antigen retrieval: citrate buffer (0.01M, pH 6.0), Boiling bathing for 15min; Block endogenous peroxidase by 3% Hydrogen peroxide for 30min; Blocking buffer (normal goat serum) at 37°C for 20 min; Incubation: Anti-KIF1B Polyclonal Antibody, Unconjugated 1:200, overnight at 4 °C.



Tissue/cell: rat brain tissue; 4% Paraformaldehyde-fixed and paraffin-embedded;

Antigen retrieval: citrate buffer (0.01M, pH 6.0), Boiling bathing for 15min; Blocking buffer (normal goat serum) at 37°C for 20 min; Incubation: Anti-KIF1B Polyclonal Antibody, FITC conjugated at 1:200 dilution for 40 minutes at 37 °C. DAPI(5ug/ml, blue) was used to stain the cell nuclei.

Note:

For research use only, not for use in diagnostic procedure.

Bioworld Technology, Inc.

Add: 1660 South Highway 100, Suite 500 St. Louis Park, MN 55416, USA.

Email: info@bioworld.com

Tel: 6123263284

Fax: 6122933841

Bioworld technology, co. Ltd.

Add: No 9, weidi road Qixia District Nanjing, 210046, P. R. China.

Email: info@biogot.com

Tel: 0086-025-68037686

Fax: 0086-025-68035151



PRODUCT DATA SHEET

Bioworld Technology, Inc.

Bioworld Technology, Inc.

Add: 1660 South Highway 100, Suite 500 St. Louis Park,
MN 55416, USA.

Email: info@bioworld.com

Tel: 6123263284

Fax: 6122933841

Bioworld technology, co. Ltd.

Add: No 9, weidi road Qixia District Nanjing, 210046,
P. R. China.

Email: info@biogot.com

Tel: 0086-025-68037686

Fax: 0086-025-68035151