

NFS1 polyclonal antibody

Catalog: BS8339

Host: Rabbit

Reactivity: Human, Mouse, Rat

BackGround:

NFS1 (nitrogen fixation 1), also known as NIFS or IscS (cysteine desulfurase), is a member of the class V pyridoxal-phosphate-dependent aminotransferase family. It localizes to the cytoplasm or mitochondrion depending on which form is generated based on cytosolic pH. Highest expression levels of NFS1 are found in heart and skeletal muscle. Lower levels of expression are also found in liver, brain and pancreas. NFS1 is responsible for catalyzing the removal of sulfur from cysteine to form alanine, thereby supplying the inorganic sulfur for iron-sulfur (Fe-S) clusters. Fe-S clusters function as essential cofactors in a wide variety of events, including facilitation of electron transfer processes in oxidative phosphorylation, catalysis of enzymatic reactions in aconitase and dehydratases and maintenance of structural integrity in the DNA repair enzyme endonuclease III.

Product:

Rabbit IgG, 1mg/ml in PBS with 0.02% sodium azide, 50% glycerol, pH7.2

Molecular Weight:

~ 50 kDa

Swiss-Prot:

Q9Y697

Purification&Purity:

The antibody was affinity-purified from rabbit antiserum by affinity-chromatography using epitope-specific immunogen and the purity is > 95% (by SDS-PAGE).

Applications:

WB: 1:500~1:2000

IHC/IF: 1:50~1:200

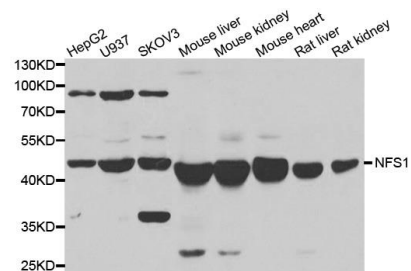
Storage&Stability:

Store at 4 °C short term. Aliquot and store at -20 °C long term. Avoid freeze-thaw cycles.

Specificity:

NFS1 polyclonal antibody detects endogenous levels of NFS1 protein.

DATA:



WesternBlot (WB) analysis of NFS1 polyclonal antibody

Note:

For research use only, not for use in diagnostic procedure.

Bioworld Technology, Inc.

Add: 1660 South Highway 100, Suite 500 St. Louis Park, MN 55416, USA.

Email: info@bioworld.com

Tel: 6123263284

Fax: 6122933841

Bioworld technology, co. Ltd.

Add: No 9, weidi road Qixia District Nanjing, 210046, P. R. China.

Email: info@biogot.com

Tel: 0086-025-68037686

Fax: 0086-025-68035151