

TAF1C polyclonal antibody

Catalog: BS8417

Host: Rabbit

Reactivity: Human, Mouse, Rat

BackGround:

For gene transcription governed by RNA polymerase I, the human transcription factor SL1 (mouse TIF-IB) directs the assembly of initiation complexes at the promoter. Like TFIID, which directs transcription by RNA polymerase II, SL1/TIF-IB contains the TATA-binding protein (TBP) and a set of TBP-associated factors (TAFs). The three TAF I subunits, hTAF I p110, hTAF I p63 and hTAF p48 (or mouse TAF I p95, TAF I p68 and TAF I p48) are all integral components of SL1/TIF-IB. The mutually exclusive binding of either TAF I or TAF II subunits to TBP is believed to direct the formation of promoter- and RNA polymerase-specific complexes.

Product:

Rabbit IgG, 1mg/ml in PBS with 0.02% sodium azide, 50% glycerol, pH7.2

Molecular Weight:

~ 110 kDa

Swiss-Prot:

Q15572

Purification&Purity:

The antibody was affinity-purified from rabbit antiserum by affinity-chromatography using epitope-specific immunogen and the purity is > 95% (by SDS-PAGE).

Applications:

WB 1:500 - 1:2000

IHC 1:50 - 1:200

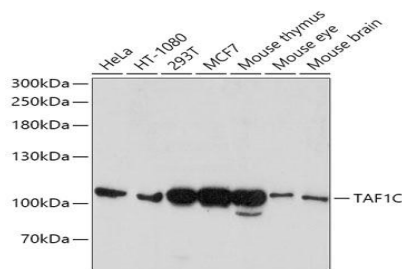
Storage&Stability:

Store at 4 °C short term. Aliquot and store at -20 °C long term. Avoid freeze-thaw cycles.

Specificity:

TAF1C polyclonal antibody detects endogenous levels of TAF1C protein.

DATA:



WesternBlot (WB) analysis of TAF1C polyclonal antibody

Note:

For research use only, not for use in diagnostic procedure.

Bioworld Technology, Inc.

Add: 1660 South Highway 100, Suite 500 St. Louis Park, MN 55416, USA.

Email: info@bioworld.com

Tel: 6123263284

Fax: 6122933841

Bioworld technology, co. Ltd.

Add: No 9, weidi road Qixia District Nanjing, 210046, P. R. China.

Email: info@biogot.com

Tel: 0086-025-68037686

Fax: 0086-025-68035151