

GOT1 polyclonal antibody

Catalog: BS8497

Host: Rabbit

Reactivity: Human, Mouse, Rat

BackGround:

Glutamic-oxaloacetic transaminase is a pyridoxal phosphate-dependent enzyme which exists in cytoplasmic and mitochondrial forms, GOT1 and GOT2, respectively. GOT plays a role in amino acid metabolism and the urea and tricarboxylic acid cycles. The two enzymes are homodimeric and show close homology.

Product:

Rabbit IgG, 1mg/ml in PBS with 0.02% sodium azide, 50% glycerol, pH7.2

Molecular Weight:

~ 46 kDa

Swiss-Prot:

P17174

Purification&Purity:

The antibody was affinity-purified from rabbit antiserum by affinity-chromatography using epitope-specific immunogen and the purity is > 95% (by SDS-PAGE).

Applications:

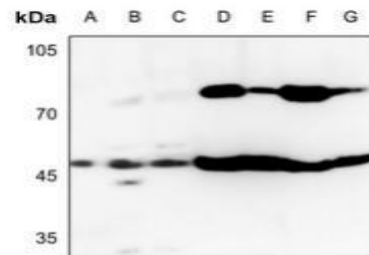
WB, 1:500 - 1:1000 | IHC, 1:50 - 1:100 | IF/ICC, 1:50 - 1:200

Storage&Stability:

Store at 4 °C short term. Aliquot and store at -20 °C long term. Avoid freeze-thaw cycles.

Specificity:

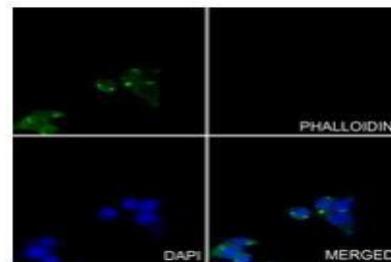
GOT1 polyclonal antibody detects endogenous levels of GOT1 protein.

DATA:

Western blot analysis of GOT1 expression in HEK293T (A), Hela (B), DLD (C), mouse heart (D), mouse brain (E), rat heart (F), rat brain (G) whole cell lysates.



Immunohistochemical analysis of GOT1 staining in human colorectal cancer formalin fixed paraffin embedded tissue section.



Immunofluorescent analysis of GOT1 staining in MCF7 cells.

Note:

For research use only, not for use in diagnostic procedure.

Bioworld Technology, Inc.

Add: 1660 South Highway 100, Suite 500 St. Louis Park, MN 55416, USA.

Email: info@bioworld.com

Tel: 6123263284

Fax: 6122933841

Bioworld technology, co. Ltd.

Add: No 9, weidi road Qixia District Nanjing, 210046, P. R. China.

Email: info@biogot.com

Tel: 0086-025-68037686

Fax: 0086-025-68035151