

GPI-PLD polyclonal antibody

Catalog: BS8533

Host: Rabbit

Reactivity: Human, Mouse, Rat

BackGround:

Phosphatidylinositol-glycan-specific phospholipase D (GPI-PLD) is a high-density lipoprotein-associated protein found on chromosome 6p22 that specifically hydrolyzes the inositol phosphate linkage in proteins anchored by phosphatidylinositol-glycans (PI-Gs). GPI-PLD is found in serum, liver, cerebrospinal fluid and in milk. The majority of plasma GPI-PLD appears to be specifically associated with a small, discrete and minor fraction of lipoproteins containing apoA-I and apoA-IV. Serum GPI-PLD activity is reduced over 75% in systemic inflammatory response syndrome and the downregulation of GPI-PLD could play an important role in the control of proinflammatory responses.

Product:

Rabbit IgG, 1mg/ml in PBS with 0.02% sodium azide, 50% glycerol, pH7.2

Molecular Weight:

~ 92kDa

Swiss-Prot:

P80108

Purification&Purity:

The antibody was affinity-purified from rabbit antiserum by affinity-chromatography using epitope-specific immunogen and the purity is > 95% (by SDS-PAGE).

Applications:

WB: 1:500~1:2000

IHC: 1:50~1:200

IF: 1:50~1:200

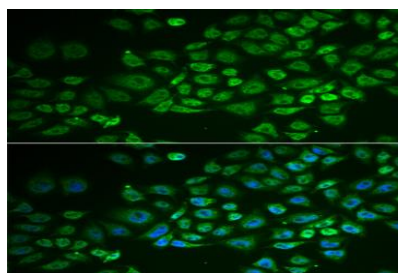
Storage&Stability:

Store at 4 °C short term. Aliquot and store at -20 °C long term. Avoid freeze-thaw cycles.

Specificity:

GPI-PLD polyclonal antibody detects endogenous levels of GPI-PLD protein.

DATA:



Immunofluorescence analysis of A549 cell using GPLD1 antibody.

Blue: DAPI for nuclear staining.

Note:

For research use only, not for use in diagnostic procedure.

Bioworld Technology, Inc.

Add: 1660 South Highway 100, Suite 500 St. Louis Park, MN 55416, USA.

Email: info@bioworld.com

Tel: 6123263284

Fax: 6122933841

Bioworld technology, co. Ltd.

Add: No 9, weidi road Qixia District Nanjing, 210046, P. R. China.

Email: info@biogot.com

Tel: 0086-025-68037686

Fax: 0086-025-68035151